

Mouse P4HB Protein

Cat. No. PHB-MM101



Description

| | |
|-------------------------|---|
| Source | Recombinant Mouse P4HB Protein is expressed from HEK293 with His tag at the C-terminal. It contains Asp20-Leu509. |
| Accession | P09103 |
| Molecular Weight | The protein has a predicted MW of 56.18 kDa. Due to glycosylation, the protein migrates to 57-70 kDa based on Tris-Bis PAGE result. |
| Endotoxin | Less than 1EU per µg by the LAL method. |
| Purity | > 95% as determined by Tris-Bis PAGE > 95% as determined by HPLC |

Formulation and Storage

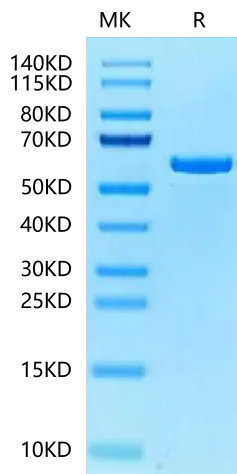
| | |
|-----------------------|---|
| Formulation | Lyophilized from 0.22 µm filtered solution in PBS (pH 7.4). Normally 8% trehalose is added as protectant before lyophilization. |
| Reconstitution | Centrifuge the tube before opening. Reconstituting to a concentration more than 100 µg/ml is recommended. Dissolve the lyophilized protein in distilled water. |
| Storage | -20 to -80°C for 12 months as supplied from date of receipt. -20 to -80°C for 3-6 months in unopened state after reconstitution. 2-8°C for 2-7 days after reconstitution. Recommend to aliquot the protein into smaller quantities for optimal storage. Please minimize freeze-thaw cycles. |

Background

Protein disulfide isomerase (PDI, also named P4HB) is a 57-kDa oxidoreductase that facilitates cysteine thiol reactions inside and outside the cell. It mediates reduction or oxidation of protein disulfide bonds, thiol/disulfide exchange reactions, and transfer of NO from one protein thiol to another. It also has chaperone properties. PDI is actively secreted by most, if not all, of the cell types involved in thrombosis, binds to integrins on the cell surface, and circulates as a soluble protein in blood.

Assay Data

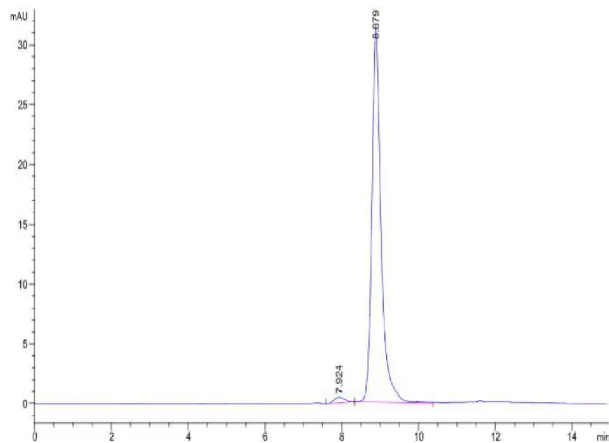
Tris-Bis PAGE



Mouse P4HB on Tris-Bis PAGE under reduced condition. The purity is greater than 95%.

SEC-HPLC

Assay Data



The purity of Mouse P4HB is greater than 95% as determined by SEC-HPLC.

Mouse P4HB Protein

Cat. No. PHB-MM101



Assay Data

Bioactivity Data

Measured by its ability to promote aggregation of insulin in the presence of DTT. The specific activity is $> 10 \text{ A}^{650}/\text{cm}/\text{min}/\text{mg}$.