

Human PHOSPHO1 Protein, Ultra Low Endotoxin

Cat. No. PHO-HE101-UL

Description

Source	Recombinant Human PHOSPHO1 Protein is expressed from E.coli with His tag at the N-Terminus. It contains Met1-Cys267.
Accession	Q8TCT1-1
Molecular Weight	The protein has a predicted MW of 30.67 kDa same as Bis-Tris PAGE result.
Endotoxin	Less than 0.01 EU per µg by the LAL method.
Purity	> 95% as determined by Bis-Tris PAGE > 95% as determined by HPLC

Formulation and Storage

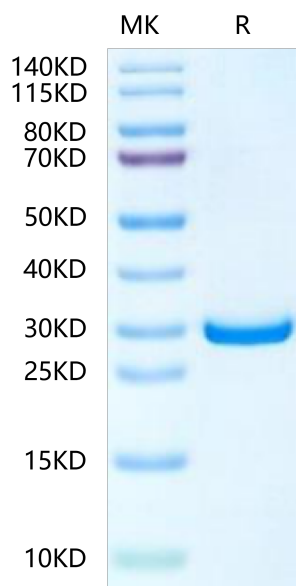
Formulation	Lyophilized from 0.22µm filtered solution in PBS, 300mM L-Arginine (pH 7.0). Normally 8% trehalose is added as protectant before lyophilization.
Reconstitution	Dissolve the lyophilized protein in distilled water. Please refer to the Certificate of Analysis for detailed instructions.
Storage	-20 to -80°C for 12 months as supplied from date of receipt. -80°C for 3 months after reconstitution. Recommend to aliquot the protein into smaller quantities for optimal storage. Please minimize freeze-thaw cycles.

Background

PHOSPHO1, a phosphoethanolamine/phosphocholine phosphatase, is upregulated in mineralising cells and is thought to be involved in the generation of inorganic phosphate for bone mineralisation.

Assay Data

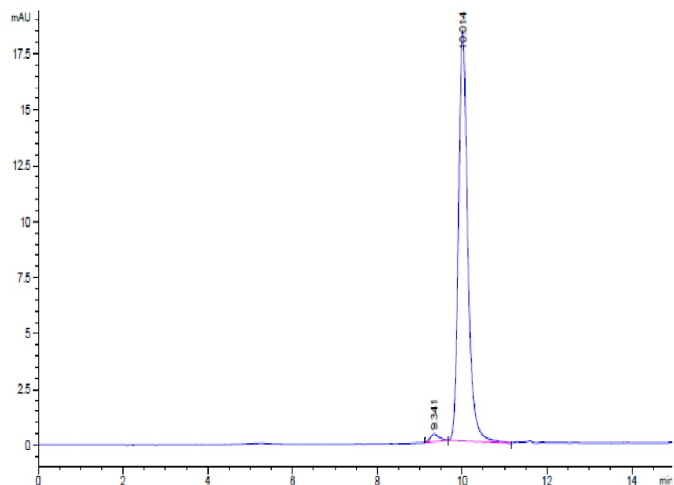
Bis-Tris PAGE



Human PHOSPHO1 on Bis-Tris PAGE under reduced condition. The purity is greater than 95%.

SEC-HPLC

Assay Data



The purity of Human PHOSPHO1 is greater than 95% as determined by SEC-HPLC.