

# Human PHOSPHO1 Protein

Cat. No. PHO-HE101



## Description

<b>Source</b>	Recombinant Human PHOSPHO1 Protein is expressed from E.coli with His tag at the N-Terminus. It contains Met1-Cys267.
<b>Accession</b>	Q8TCT1-1
<b>Molecular Weight</b>	The protein has a predicted MW of 30.67 kDa same as Tris-Bis PAGE result.
<b>Endotoxin</b>	Less than 1EU per µg by the LAL method.
<b>Purity</b>	> 95% as determined by Tris-Bis PAGE > 95% as determined by HPLC

## Formulation and Storage

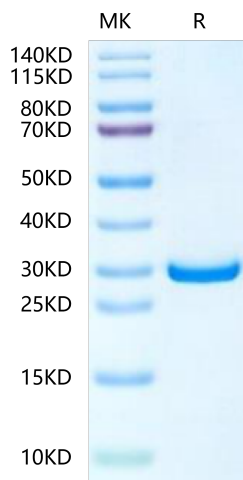
<b>Formulation</b>	Lyophilized from 0.22µm filtered solution in PBS, 300mM L-Arginine (pH 7.0). Normally 8% trehalose is added as protectant before lyophilization.
<b>Reconstitution</b>	Centrifuge the tube before opening. Reconstituting to a concentration more than 100 µg/ml is recommended. Dissolve the lyophilized protein in distilled water.
<b>Storage</b>	-20 to -80°C for 12 months as supplied from date of receipt. -20 to -80°C for 3-6 months in unopened state after reconstitution. 2-8°C for 2-7 days after reconstitution. Recommend to aliquot the protein into smaller quantities for optimal storage. Please minimize freeze-thaw cycles.

## Background

PHOSPHO1, a phosphoethanolamine/phosphocholine phosphatase, is upregulated in mineralising cells and is thought to be involved in the generation of inorganic phosphate for bone mineralisation.

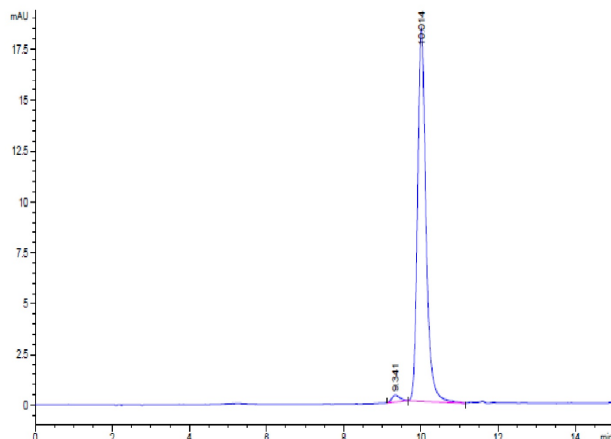
## Assay Data

### Tris-Bis PAGE



Human PHOSPHO1 on Tris-Bis PAGE under reduced condition. The purity is greater than 95%.

### SEC-HPLC



The purity of Human PHOSPHO1 is greater than 95% as determined by SEC-HPLC.