

Canine PRLR Protein

Cat. No. PLR-DM201



Description

Source	Recombinant Canine PRLR Protein is expressed from Expi293 with hFc tag at the C-terminal. It contains Gln25-Thr235.
Accession	XM_038663941.1
Molecular Weight	The protein has a predicted MW of 53.89 kDa. Due to glycosylation, the protein migrates to 65-70 kDa based on Tris-Bis PAGE result.
Endotoxin	Less than 1EU per μg by the LAL method.
Purity	> 95% as determined by Tris-Bis PAGE > 95% as determined by HPLC

Formulation and Storage

Formulation	Supplied as 0.22 μm filtered solution in PBS (pH 7.4). Please dilute to the desired concentration according to the concentration of the solution shown on the product label.
Storage	Valid for 12 months from date of receipt when stored at -80°C . Recommend to aliquot the protein into smaller quantities for optimal storage. Please do not repeated freeze-thaw cycles.

Background

Prolactin receptor (PRLR) is highly expressed in a subset of human breast cancer and prostate cancer, which makes it a potential target for cancer treatment. In clinical trials, the blockade of PRLR was shown to be safe but with poor efficacy. It is therefore urgent to develop new therapies against PRLR target. Bispecific antibodies (BsAbs) could guide immune cells toward tumor cells, and produced remarkable effects in some cancers.

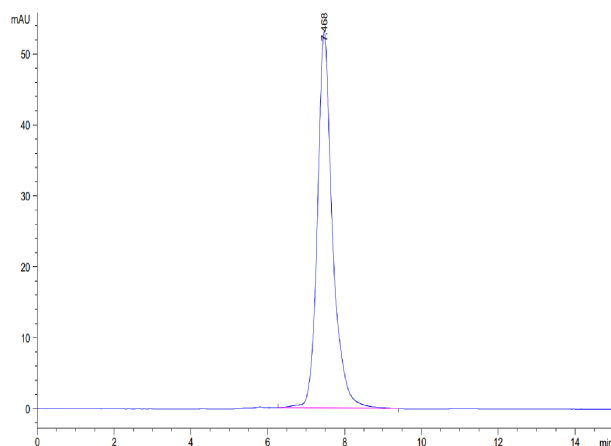
Assay Data

Tris-Bis PAGE



Canine PRLR on Tris-Bis PAGE under reduced condition. The purity is greater than 95%.

SEC-HPLC



The purity of Canine PRLR is greater than 95% as determined by SEC-HPLC.