

Human PRLR Protein, Ultra Low Endotoxin



Cat. No. PLR-HM101-UL

Description

Source	Recombinant Human PRLR Protein is expressed from HEK293 with His tag at the C-Terminus.
	It contains Gln25-Asp234.
Accession	P16471-1
Molecular Weight	The protein has a predicted MW of 25.5 kDa. Due to glycosylation, the protein migrates to 35-40 kDa based on Bis-Tris PAGE result.
Endotoxin	Less than 0.01 EU per µg by the LAL method.
Purity	> 95% as determined by Bis-Tris PAGE
	> 95% as determined by HPLC

Formulation and Storage

Formulation	Lyophilized from 0.22µm filtered solution in 50mM Tris, 150mM NaCl (pH 7.5). Normally 8% trehalose is added as protectant before lyophilization.
Reconstitution	Dissolve the lyophilized protein in distilled water. Please refer to the Certificate of Analysis for detailed instructions.
Storage	-20 to -80°C for 12 months as supplied from date of receipt. -80°C for 3 months after reconstitution. Recommend to aliquot the protein into smaller quantities for optimal storage. Please minimize freeze-thaw cycles.

Background

Prolactin receptor (PRLR) is highly expressed in a subset of human breast cancer and prostate cancer, which makes it a potential target for cancer treatment. In clinical trials, the blockade of PRLR was shown to be safe but with poor efficacy. It is therefore urgent to develop new therapies against PRLR target. Bispecific antibodies (BsAbs) could guide immune cells toward tumor cells, and produced remarkable effects in some cancers.

Assay Data

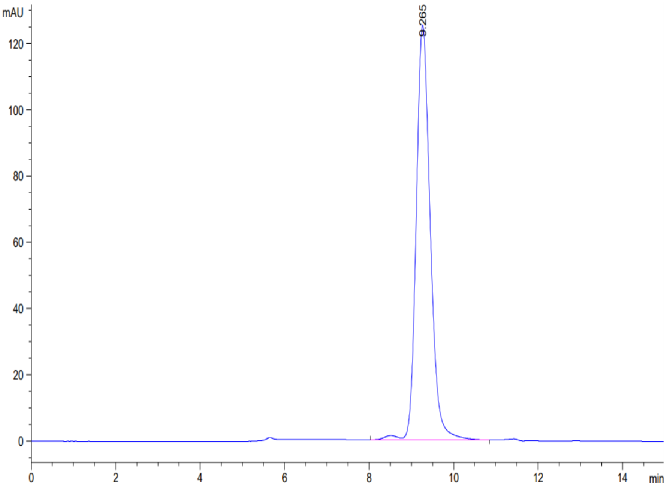
Bis-Tris PAGE



Human PRLR on Bis-Tris PAGE under reduced condition. The purity is greater than 95%.

SEC-HPLC

Assay Data

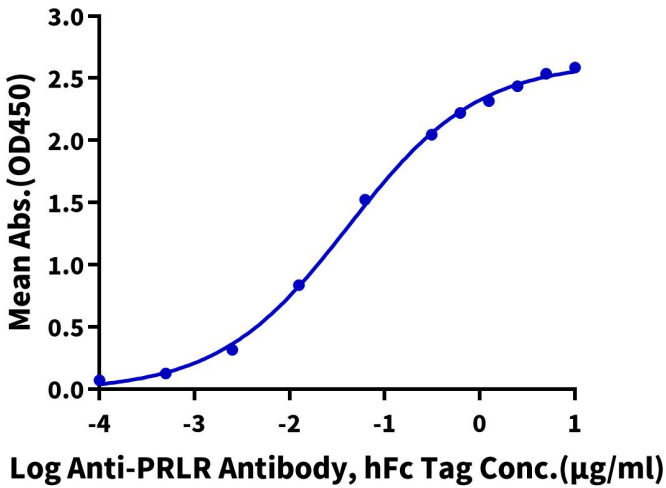


The purity of Human PRLR is greater than 95% as determined by SEC-HPLC.

ELISA Data

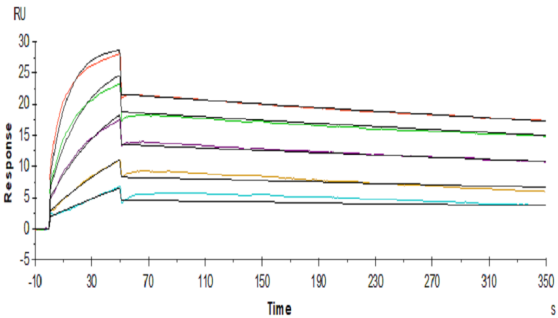
Human PRLR, His Tag ELISA

0.2μg Human PRLR, His Tag Per Well



Immobilized Human PRLR, His Tag at 2μg/ml (100μl/Well) on the plate. Dose response curve for Anti-PRLR Antibody, hFc Tag with the EC50 of 28.2ng/ml determined by ELISA (QC Test).

SPR Data



Human PRLR, His Tag captured on CM5 Chip via anti-His antibody can bind Anti-PRLR Antibody, hFc Tag with an affinity constant of 0.96nM as determined in SPR assay (Biacore T200).