

# Cynomolgus PILRA Protein

Cat. No. PRA-CM101



## Description

<b>Source</b>	Recombinant Cynomolgus PILRA Protein is expressed from HEK293 with His tag at the C-terminus. It contains Gln20-Ala188.
<b>Accession</b>	A0A7N9CXR8
<b>Molecular Weight</b>	The protein has a predicted MW of 20.17 kDa. Due to glycosylation, the protein migrates to 35-50 kDa based on Bis-Tris PAGE result.
<b>Endotoxin</b>	Less than 0.1 EU per µg by the LAL method.
<b>Purity</b>	> 95% as determined by Bis-Tris PAGE > 95% as determined by HPLC

## Formulation and Storage

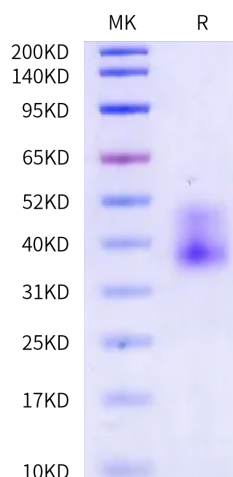
<b>Formulation</b>	Supplied as 0.22 µm filtered solution in PBS (pH 7.4).
<b>Storage</b>	Valid for 12 months from date of receipt when stored at -80°C. Recommend to aliquot the protein into smaller quantities for optimal storage. Please minimize freeze-thaw cycles.

## Background

Paired immunoglobulin-like type 2 receptor alpha (PILRA), which is mainly expressed on immune cells, including macrophages, dendritic cells and granulocytes, is related to regulation of broad immune responses. Bearing two immunoreceptor tyrosine-based inhibition motifs (ITIMs) in its cytoplasmic domain, PILRA functions to transmit inhibitory signals by recruiting SHP-1 and SHP-2, upon recognition of ligands such as CD99, neuronal differentiation proliferation factor-1 and CD8A, etc.

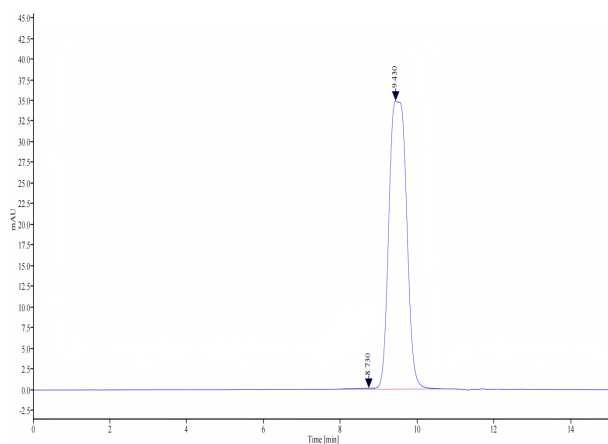
## Assay Data

### Bis-Tris PAGE



Cynomolgus PILRA on Bis-Tris PAGE under reduced condition. The purity is greater than 95%.

### SEC-HPLC



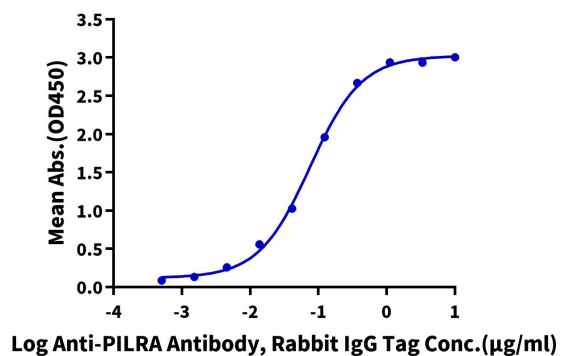
The purity of Cynomolgus PILRA is greater than 95% as determined by SEC-HPLC.

Assay Data

ELISA Data

**Cynomolgus PILRA, His Tag ELISA**

0.05µg Cynomolgus PILRA, His Tag Per Well



Immobilized Cynomolgus PILRA, His Tag at 0.5µg/ml (100µl/well) on the plate. Dose response curve for Anti-PILRA Antibody, Rabbit IgG Tag with the EC50 of 75.5ng/ml determined by ELISA.