

Human PS20 Protein

Cat. No. PS2-HE120

Description

Source	Recombinant Human PS20 Protein is expressed from E.coli with His tag at the N-Terminus. It contains Lys32-Gln220.
Accession	Q9HC57
Molecular Weight	The protein has a predicted MW of 22 kDa. The protein migrates to 25-30 kDa based on Bis-Tris PAGE result.
Endotoxin	Less than 1EU per µg by the LAL method.
Purity	> 95% as determined by Bis-Tris PAGE

Formulation and Storage

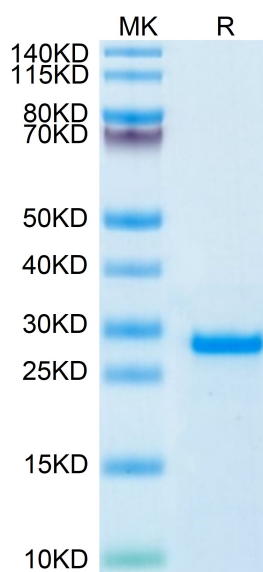
Formulation	Supplied as 0.22µm filtered solution in 20mM PB, 500mM NaCl, 200mM L-arginine (pH 7.4).
Storage	Valid for 12 months from date of receipt when stored at -80°C. Recommend to aliquot the protein into smaller quantities for optimal storage. Please minimize freeze-thaw cycles.

Background

The whey acidic protein family member, WFDC1/ps20 is a permissivity factor in HIV infection. Herein we describe a contrasting role for ps20 in limiting MHV-1 infection. Intranasal MHV-1 infection produces a respiratory infection in mice. Using ps20 knockout mice we provide evidence that intranasal MHV-1 infection results in increased lung viral titers in ps20(-/-) compared to ps20(+) mice. Roles for ps20 in regulating expression of neutrophil-specific chemotactic factors, thereby potentially modulating neutrophil migration, and in modulating neutrophil susceptibility to MHV-1 infection.

Assay Data

Bis-Tris PAGE



Human PS20 on Bis-Tris PAGE under reduced condition. The purity is greater than 95%.