

# Cynomolgus PSGL-1 Protein

Cat. No. PSG-CM162



## Description

<b>Source</b>	Recombinant Cynomolgus PSGL-1 Protein is expressed from Expi293 with His tag at the C-terminal. It contains Leu34-Cys356.
<b>Accession</b>	A0A7N9CVJ8
<b>Molecular Weight</b>	The protein has a predicted MW of 34.57 kDa. Due to glycosylation, the protein migrates to 72-82 kDa based on Tris-Bis PAGE result.
<b>Endotoxin</b>	Less than 1EU per µg by the LAL method.
<b>Purity</b>	> 95% as determined by Tris-Bis PAGE > 95% as determined by HPLC

## Formulation and Storage

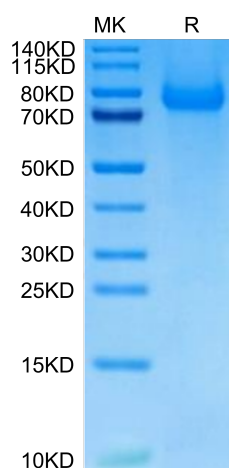
<b>Formulation</b>	Supplied as 0.22µm filtered solution in PBS (pH 7.4). Please dilute to the desired concentration according to the concentration of the solution shown on the product label.
<b>Storage</b>	Valid for 12 months from date of receipt when stored at -80°C. Recommend to aliquot the protein into smaller quantities for optimal storage. Please do not repeated freeze-thaw cycles.

## Background

P-selectin glycoprotein ligand-1 (PSGL-1) has long been studied as an adhesion molecule involved in immune cell trafficking and is recognized as a regulator of many facets of immune responses by myeloid cells. PSGL-1 also regulates T cell migration during homeostasis and inflammatory settings.

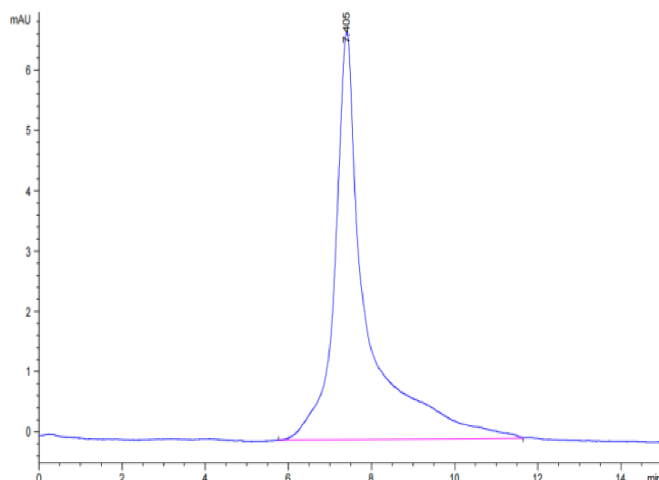
## Assay Data

### Tris-Bis PAGE



Cynomolgus PSGL-1 on Tris-Bis PAGE under reduced condition. The purity is greater than 95%.

### SEC-HPLC



The purity of Cynomolgus PSGL-1 is greater than 95% as determined by SEC-HPLC.