

Human PSGL-1 Protein

Cat. No. PSG-HM162



Description

Source	Recombinant Human PSGL-1 Protein is expressed from HEK293 with His tag at the C-Terminus. It contains Gln42-Cys320.
Accession	Q14242-1
Molecular Weight	The protein has a predicted MW of 30 kDa. Due to glycosylation, the protein migrates to 75-120 kDa based on Bis-Tris PAGE result.
Endotoxin	Less than 1EU per μg by the LAL method.
Purity	> 95% as determined by Bis-Tris PAGE

Formulation and Storage

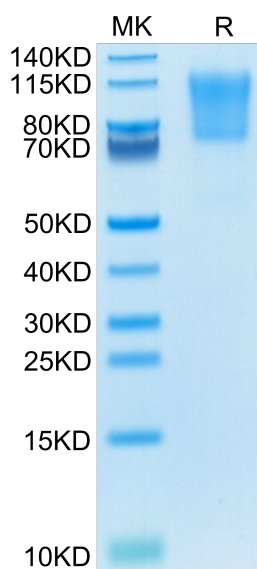
Formulation	Supplied as 0.22 μm filtered solution in PBS (pH 7.4).
Storage	Valid for 12 months from date of receipt when stored at -80°C. Recommend to aliquot the protein into smaller quantities for optimal storage. Please minimize freeze-thaw cycles.

Background

P-selectin glycoprotein ligand-1 (PSGL-1) has long been studied as an adhesion molecule involved in immune cell trafficking and is recognized as a regulator of many facets of immune responses by myeloid cells. PSGL-1 also regulates T cell migration during homeostasis and inflammatory settings.

Assay Data

Bis-Tris PAGE



Human PSGL-1 on Bis-Tris PAGE under reduced condition. The purity is greater than 95%.