

Biotinylated Human PSMA/FOLH1 Protein

Cat. No. PSM-HM410B

Description

Source	Recombinant Biotinylated Human PSMA/FOLH1 Protein is expressed from HEK293 with His tag and Avi tag at the N-terminus. It contains Lys44-Ala750.
Accession	Q04609-1
Molecular Weight	The protein has a predicted MW of 82.43 kDa. Due to glycosylation, the protein migrates to 95-115 kDa based on Tris-Bis PAGE result.
Endotoxin	Less than 1EU per µg by the LAL method.
Purity	> 95% as determined by Tris-Bis PAGE > 90% as determined by HPLC

Formulation and Storage

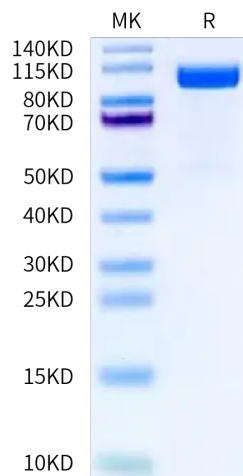
Formulation	Lyophilized from 0.22 µm filtered solution in 25 mM MES, 500 mM NaCl (pH 6.5). Normally 8% mannitol is added as protectant before lyophilization.
Reconstitution	Centrifuge the tube before opening. Reconstituting to a concentration more than 100 µg/ml is recommended. Dissolve the lyophilized protein in distilled water.
Storage	-20 to -80°C for 12 months as supplied from date of receipt. -80°C for 3-6 months after reconstitution. 2-8°C for 2-7 days after reconstitution. Recommend to aliquot the protein into smaller quantities for optimal storage. Please minimize freeze-thaw cycles.

Background

Prostate-specific membrane antigen (PSMA) is an enzyme that in humans is encoded by the FOLH1 (folate hydrolase 1) gene, also known as Glutamate carboxypeptidase II (GCPII). Human PSMA is highly expressed in the prostate, roughly a hundred times greater than in most other tissues. In some prostate cancers, PSMA is the second-most upregulated gene product, with an 8- to 12-fold increase over levels in noncancerous prostate cells.

Assay Data

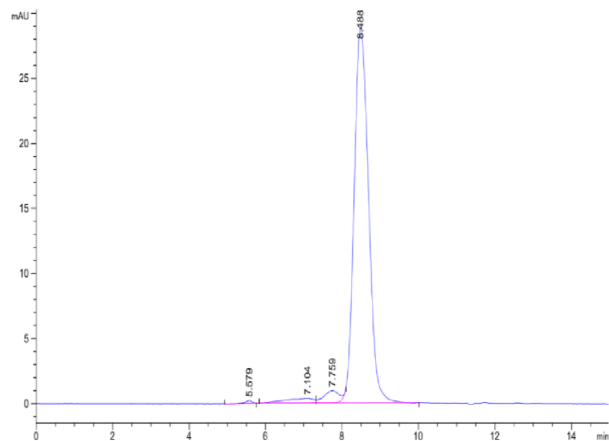
Tris-Bis PAGE



Biotinylated Human PSMA on Tris-Bis PAGE under reduced condition. The purity is greater than 95%.

SEC-HPLC

Assay Data



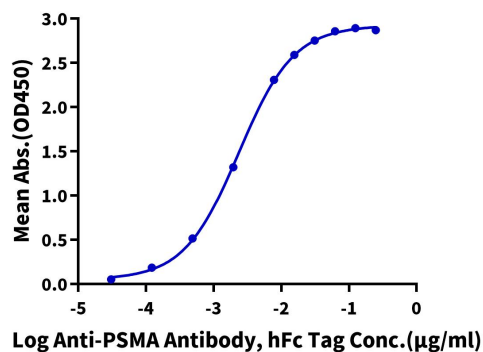
The purity of Biotinylated Human PSMA is greater than 90% as determined by SEC-HPLC.

Assay Data

ELISA Data

Biotinylated Human PSMA, His Tag ELISA

0.1µg Biotinylated Human PSMA, His Tag Per Well



Immobilized Biotinylated Human PSMA, His Tag at 1µg/ml (100µl/well) on the streptavidin precoated plate (5µg/ml). Dose response curve for Anti-PSMA Antibody, hFc Tag with the EC50 of 2.4ng/ml determined by ELISA.