

Human RGM-C Protein, Ultra Low Endotoxin

Cat. No. RGM-HM10C-UL

Description

Source	Recombinant Human RGM-C Protein is expressed from HEK293 with His tag at the C-terminus. It contains Gln36-Asp400.
Accession	Q6ZVN8-1
Molecular Weight	The protein has a predicted MW of 40 kDa. Due to autocatalytic cleavage, the protein migrates to 50-60 kDa (mature), 30-40 kDa (C-terminus chain) and 20-25 kDa (N-terminus chain) based on Bis-Tris PAGE result.
Endotoxin	Less than 0.01 EU per µg by the LAL method.
Purity	> 95% as determined by Bis-Tris PAGE > 95% as determined by HPLC

Formulation and Storage

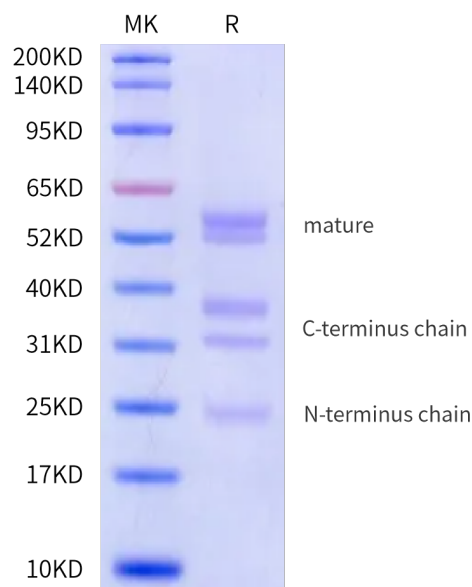
Formulation	Lyophilized from 0.22µm filtered solution in PBS (pH 7.4). Normally 8% trehalose is added as protectant before lyophilization.
Reconstitution	Dissolve the lyophilized protein in distilled water. Please refer to the Certificate of Analysis for detailed instructions.
Storage	-20 to -80°C for 24 months as supplied from date of receipt. -80°C for 3 months after reconstitution. Recommend to aliquot the protein into smaller quantities for optimal storage. Please minimize freeze-thaw cycles.

Background

RGM gene family ('Repulsive Axonal Guidance molecules' A, B and C), both RGM A and B are mostly expressed in central nervous system, while RGM C is exclusively expressed in all striated muscle and in the myocardium. RGM A and B appear at every level of the developing neural axis, where they colocalize to a large extent in the mantle layer, although only RGM A appears in the neuroepithelium, and only RGM B in the peripheral nervous system.

Assay Data

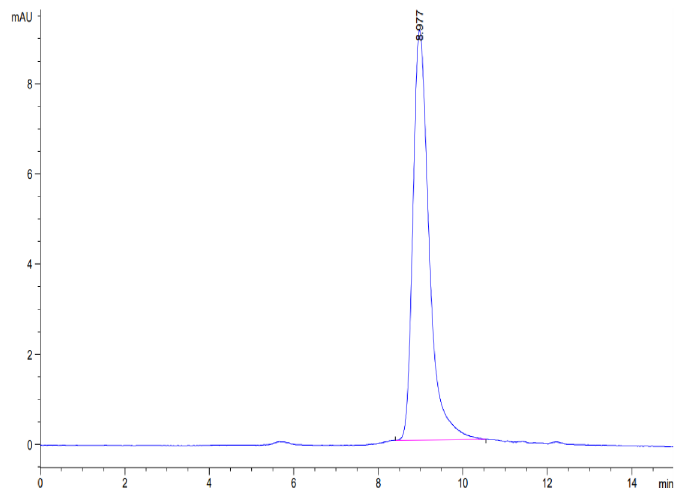
Bis-Tris PAGE



Human RGM-C on Bis-Tris PAGE under reduced condition. The purity is greater than 95%.

SEC-HPLC

Assay Data

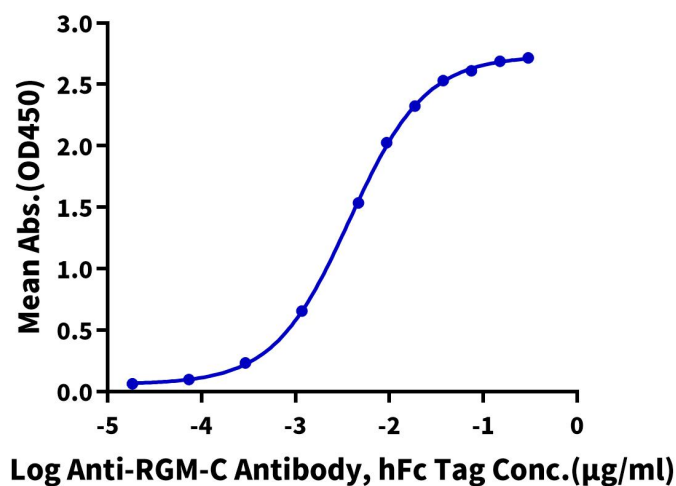


The purity of Human RGM-C is greater than 95% as determined by SEC-HPLC.

ELISA Data

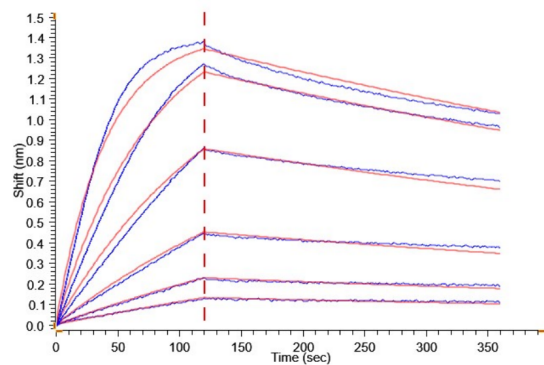
Human RGM-C, His Tag ELISA

0.1µg Human RGM-C, His Tag Per Well



Immobilized Human RGM-C, His Tag at 1µg/ml (100µl/well) on the plate. Dose response curve for Anti-RGM-C Antibody, hFc Tag with the EC50 of 3.8ng/ml determined by ELISA.

BLI Data



Loaded Anti-RGM-C Ab., hFc-Avi Tag on ProA-Biosensor can bind Human RGM-C, His Tag with an affinity constant of 4.59 nM as determined in BLI assay.