

# Human RGM-C Domain Protein

Cat. No. RGM-HM30D

## Description

<b>Source</b>	Recombinant Human RGM-C Domain Protein is expressed from HEK293 with mFc (IgG2a) tag at the C-terminus. It contains Gln36-Pro145.
<b>Accession</b>	Q6ZVN8-1
<b>Molecular Weight</b>	The protein has a predicted MW of 37.43 kDa. Due to glycosylation, the protein migrates to 45-55 kDa based on Bis-Tris PAGE result.
<b>Endotoxin</b>	Less than 1EU per $\mu\text{g}$ by the LAL method.
<b>Purity</b>	>95% as determined by Bis-Tris PAGE >95% as determined by HPLC

## Formulation and Storage

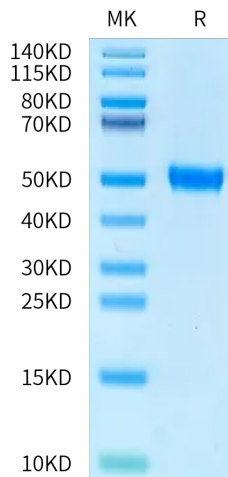
<b>Formulation</b>	Lyophilized from 0.22 $\mu\text{m}$ filtered solution in PBS (pH 7.4). Normally 8% trehalose is added as protectant before lyophilization.
<b>Reconstitution</b>	Centrifuge the tube before opening. Reconstituting to a concentration more than 100 $\mu\text{g}/\text{ml}$ is recommended. Dissolve the lyophilized protein in distilled water.
<b>Storage</b>	-20 to -80°C for 12 months as supplied from date of receipt. -80°C for 3 months after reconstitution. Recommend to aliquot the protein into smaller quantities for optimal storage. Please minimize freeze-thaw cycles.

## Background

RGM gene family ('Repulsive Axonal Guidance molecules' A, B and C), both RGM A and B are mostly expressed in central nervous system, while RGM C is exclusively expressed in all striated muscle and in the myocardium. RGM A and B appear at every level of the developing neural axis, where they colocalize to a large extent in the mantle layer, although only RGM A appears in the neuroepithelium, and only RGM B in the peripheral nervous system.

## Assay Data

### Bis-Tris PAGE



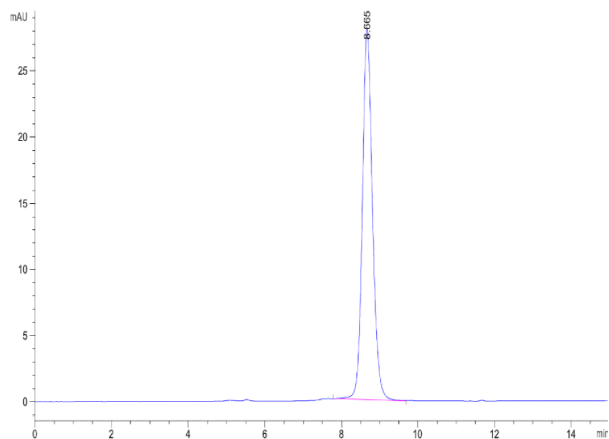
Human RGM-C Domain on Bis-Tris PAGE under reduced condition. The purity is greater than 95%.

### SEC-HPLC

# Human RGM-C Domain Protein

Cat. No. RGM-HM30D

## Assay Data



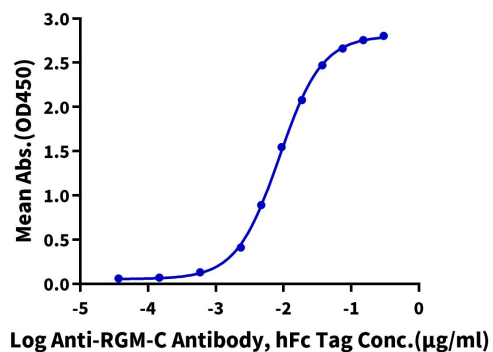
The purity of Human RGM-C Domain is greater than 95% as determined by SEC-HPLC.

Assay Data

ELISA Data

**Human RGM-C Domain, mFc Tag ELISA**

0.05µg Human RGM-C Domain, mFc Tag Per Well



Immobilized Human RGM-C Domain, mFc Tag at 0.5µg/ml (100µl/well) on the plate. Dose response curve for Anti-RGM-C Antibody, hFc Tag with the EC50 of 8.6ng/ml determined by ELISA (QC Test).