

Biotinylated Human RGM-C Protein

Cat. No. RGM-HM60CB

Description

| | |
|-------------------------|--|
| Source | Recombinant Biotinylated Human RGM-C Protein is expressed from HEK293 with Avi tag at the C-terminus. It contains Gln36-Asp400. |
| Accession | Q6ZVN8-1 |
| Molecular Weight | The protein has a predicted MW of 40 kDa (mature), 26 kDa (C-terminus peptide) and 14 kDa (N-terminus peptide). Due to furin cleavage site, the protein migrates to 55-60 kDa, 30-40 kDa, 20-25 kDa based on Bis-Tris PAGE result. |
| Endotoxin | Less than 1EU per µg by the LAL method. |
| Purity | >95% as determined by Bis-Tris PAGE >95% as determined by HPLC |

Formulation and Storage

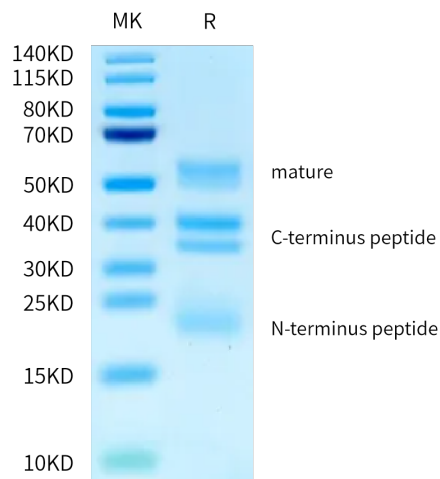
| | |
|-----------------------|---|
| Formulation | Lyophilized from 0.22 µm filtered solution in PBS (pH 7.4). Normally 8% trehalose is added as protectant before lyophilization. |
| Reconstitution | Centrifuge the tube before opening. Reconstituting to a concentration more than 100 µg/ml is recommended. Dissolve the lyophilized protein in distilled water. |
| Storage | -20 to -80°C for 12 months as supplied from date of receipt. -80°C for 3 months after reconstitution. Recommend to aliquot the protein into smaller quantities for optimal storage. Please minimize freeze-thaw cycles. |

Background

RGM gene family ('Repulsive Axonal Guidance molecules' A, B and C), both RGM A and B are mostly expressed in central nervous system, while RGM C is exclusively expressed in all striated muscle and in the myocardium. RGM A and B appear at every level of the developing neural axis, where they colocalize to a large extent in the mantle layer, although only RGM A appears in the neuroepithelium, and only RGM B in the peripheral nervous system.

Assay Data

Bis-Tris PAGE



Biotinylated Human RGM-C on Bis-Tris PAGE under reduced condition. The purity is greater than 95%.

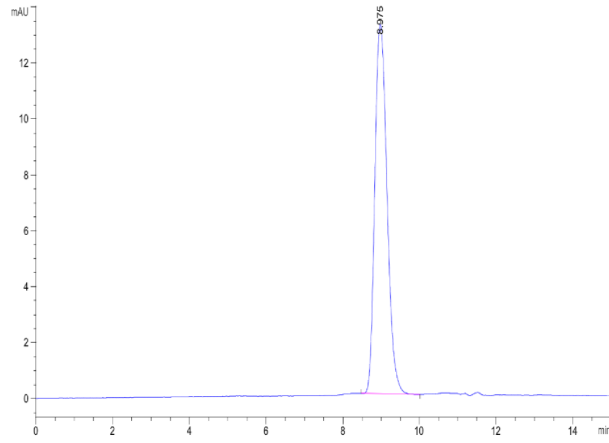
SEC-HPLC

Biotinylated Human RGM-C Protein

Cat. No. RGM-HM60CB



Assay Data



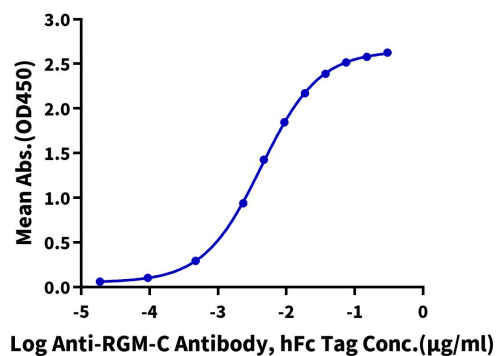
The purity of Biotinylated Human RGM-C is greater than 95% as determined by SEC-HPLC.

Assay Data

ELISA Data

Biotinylated Human RGM-C, Avi Tag ELISA

0.05µg Biotinylated Human RGM-C, Avi Tag Per Well



Immobilized Biotinylated Human RGM-C, Avi Tag at 0.5µg/ml (100µl/well) on the streptavidin precoated plate (5µg/ml). Dose response curve for Anti-RGM-C Antibody, hFc Tag with the EC50 of 4.3ng/ml determined by ELISA (QC Test).