

Cat. No. ROR-HM1IF

Description

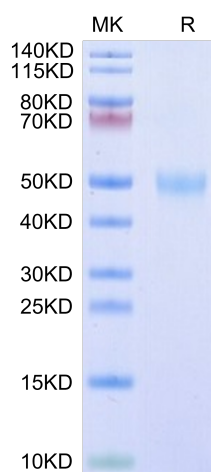
Source	Recombinant Human/Cynomolgus/Rhesus macaque ROR1 (30-305,Ig-like&Frizzled Domain) Protein is expressed from HEK293 with His tag at the C-Terminus. It contains Gln30-Asp305.
Accession	Q01973-1(Human) / A0A2K5WTX7(Cynomolgus) / F6RUP2(Rhesus macaque)
Molecular Weight	The protein has a predicted MW of 31.90 kDa. Due to glycosylation, the protein migrates to 48-53 kDa based on Bis-Tris PAGE result.
Endotoxin	Less than 1EU per µg by the LAL method.
Purity	> 95% as determined by Bis-Tris PAGE > 95% as determined by HPLC

Formulation and Storage

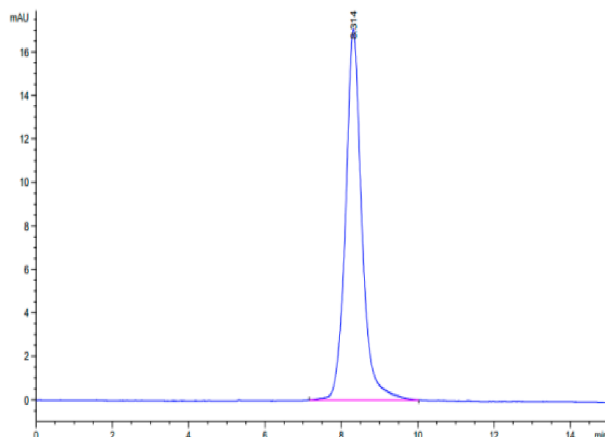
Formulation	Supplied as 0.22µm filtered solution in PBS (pH 7.4).
Storage	Valid for 12 months from date of receipt when stored at -80°C. Recommend to aliquot the protein into smaller quantities for optimal storage. Please minimize freeze-thaw cycles.

Background

ROR1 (Receptor tyrosine kinase-like orphan receptor 1), also known as neurotrophic tyrosine kinase receptor-related 1 (NTRKR1), is a member of the ROR family within receptor tyrosine kinases (RTK) superfamily. Two ROR family members (ROR1 and ROR2) have been identified and are characterized by the intracellular tyrosine kinase domains, highly related to those of the Trk-family receptor tyrosine kinases, and by the extracellular Frizzled-like cysteine-rich domains and kringle domains, which are common to receptors of the Wnt family members.

Assay Data**Bis-Tris PAGE**

Human/Cynomolgus/Rhesus macaque ROR1 (30-305,Ig-like&Frizzled Domain) on Bis-Tris PAGE under reduced condition. The purity is greater than 95%.

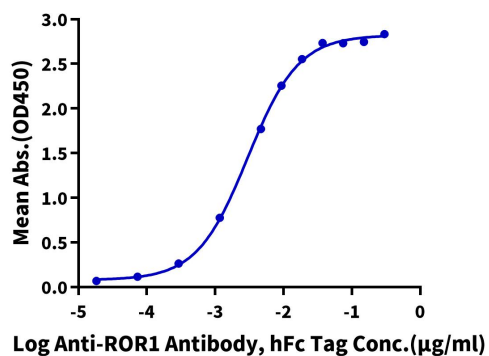
SEC-HPLC

The purity of Human/Cynomolgus/Rhesus macaque ROR1 (30-305,Ig-like&Frizzled Domain) is greater than 95% as determined by SEC-HPLC.

Cat. No. ROR-HM1IF

Assay Data

ELISA Data

Human/Cynomolgus/Rhesus macaque ROR1, His Tag ELISA0.2 μ g Human/Cynomolgus/Rhesus macaque ROR1, His Tag Per Well

Immobilized Human/Cynomolgus/Rhesus macaque ROR1 (30-305,Ig-like&Frizzled Domain), His Tag at 2 μ g/ml (100 μ l/well) on the plate. Dose response curve for Anti-ROR1 Antibody, hFc Tag with the EC50 of 3.0ng/ml determined by ELISA.