

Mouse R spondin 1/RSPO1 Protein

Cat. No. RS1-MM101

Description

Source	Recombinant Mouse R spondin 1/RSPO1 Protein is expressed from HEK293 with His tag at the C-Terminus. It contains Ser21-Gln265.
Accession	Q9Z132
Molecular Weight	The protein has a predicted MW of 28.3 kDa. Due to glycosylation, the protein migrates to 45-48 kDa based on Bis-Tris PAGE result.
Endotoxin	Less than 1EU per μg by the LAL method.
Purity	> 95% as determined by Bis-Tris PAGE

Formulation and Storage

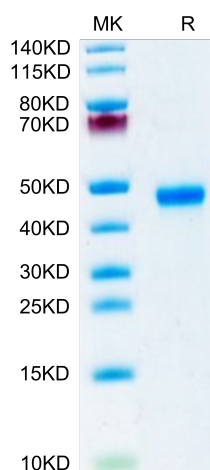
Formulation	Supplied as 0.22 μm filtered solution in 20mM MES, 150mM NaCl, 200mM Arginine (pH 5.5).
Storage	Valid for 12 months from date of receipt when stored at -80°C. Recommend to aliquot the protein into smaller quantities for optimal storage. Please minimize freeze-thaw cycles.

Background

The R-spondins are members of a superfamily of thrombospondin type 1 repeat (TSR-1)-containing proteins. The prototype member (discovered in 1971) was isolated from platelets that had been stimulated with thrombin, and was therefore designated 'thrombin-sensitive protein.

Assay Data

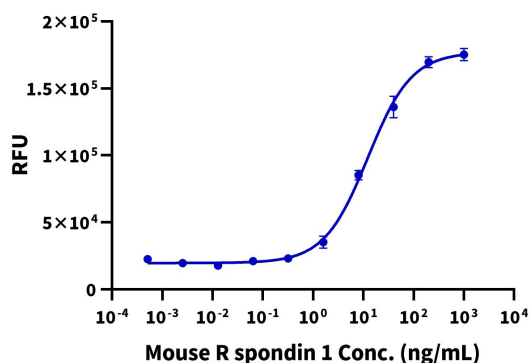
Bis-Tris PAGE



Mouse R spondin 1 on Bis-Tris PAGE under reduced condition. The purity is greater than 95%.

Cell Based Assay

Recombinant Mouse R spondin 1 Bioactivity



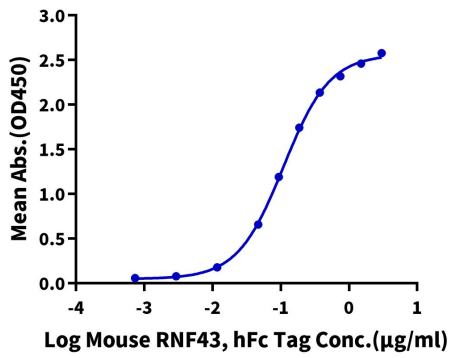
Measured by its ability to induce Topflash reporter activity in HEK293T human embryonic kidney cells. The ED50 for this effect is 2 - 20 ng/mL in the presence of 5 ng/mL recombinant Human Wnt Surrogate-Fc Fusion (WNT-HM23A) (QC Test).

Assay Data

ELISA Data

Mouse R spondin 1, His Tag ELISA

0.5µg Mouse R spondin 1, His Tag Per Well



Immobilized Mouse R spondin 1, His Tag at 5µg/ml (100µl/Well) on the plate. Dose response curve for Mouse RNF43, hFc Tag with the EC50 of 0.11µg/ml determined by ELISA.