

Canine S100B Protein

Cat. No. S10-DM20B



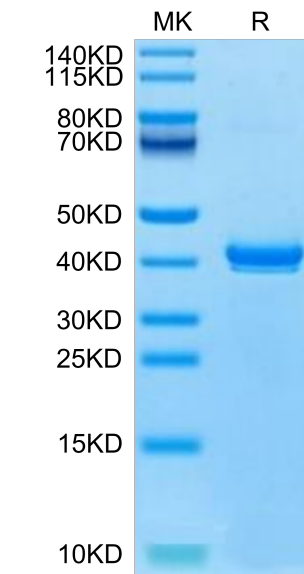
Description	
Source	Recombinant Canine S100B Protein is expressed from HEK293 with hFc tag at the N-Terminus. It contains Ser2-Glu92.
Accession	E2QTP3
Molecular Weight	The protein has a predicted MW of 36.52 kDa. Due to glycosylation, the protein migrates to 40-45 kDa based on Bis-Tris PAGE result.
Endotoxin	Less than 1EU per µg by the LAL method.
Purity	> 95% as determined by Bis-Tris PAGE > 95% as determined by HPLC

Formulation and Storage	
Formulation	Lyophilized from 0.22µm filtered solution in PBS (pH 7.4). Normally 8% trehalose is added as protectant before lyophilization.
Reconstitution	Centrifuge the tube before opening. Reconstituting to a concentration more than 100 µg/ml is recommended. Dissolve the lyophilized protein in distilled water.
Storage	-20 to -80°C for 12 months as supplied from date of receipt.-80°C for 3-6 months after reconstitution.2-8°C for 2-7 days after reconstitution.Recommend to aliquot the protein into smaller quantities for optimal storage. Please minimize freeze-thaw cycles.

Background	
S100B, a calcium-binding protein of the EF-hand type exerts both intracellular and extracellular functions.The intracellular, and extracellular, roles of S100B are attractive therapeutic targets for the treatment of both cardiac and vascular disease.	

Assay Data

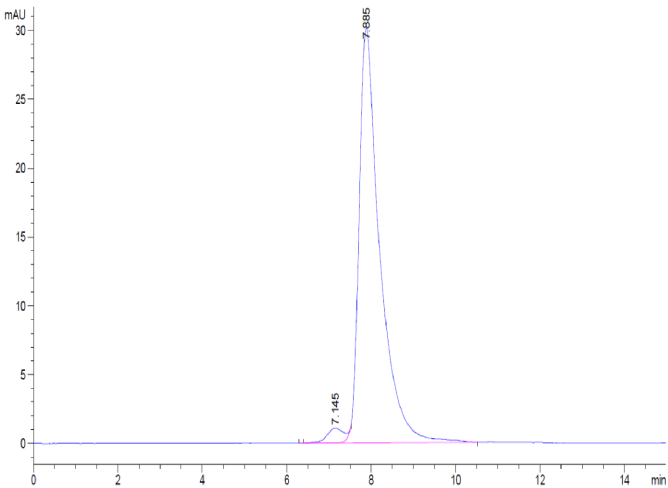
Bis-Tris PAGE



Canine S100B on Bis-Tris PAGE under reduced condition. The purity is greater than 95%.

SEC-HPLC

Assay Data



The purity of Canine S100B is greater than 95% as determined by SEC-HPLC.