

SARS PLpro/papain-like protease Protein

Cat. No. SAR-VE101

Description

Source	Recombinant SARS PLpro/papain-like protease Protein is expressed from E.coli with His tag at the C-terminus. It contains Glu1541-Tyr1859.
Accession	AAX16193.1
Molecular Weight	The protein has a predicted MW of 36.91 kDa same as Tris-Bis PAGE result.
Endotoxin	Less than 1EU per µg by the LAL method.
Purity	> 95% as determined by Tris-Bis PAGE

Formulation and Storage

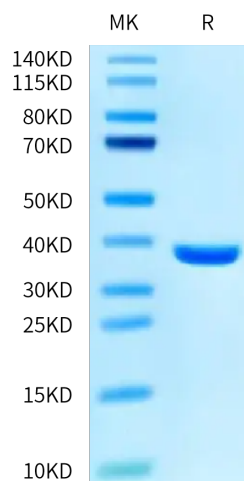
Formulation	Supplied as 0.22 µm filtered solution in PBS (pH 7.4).
Storage	Valid for 12 months from date of receipt when stored at -80°C. Recommend to aliquot the protein into smaller quantities for optimal storage. Please minimize freeze-thaw cycles.

Background

The coronaviral proteases, papain-like protease (PLpro) and 3C-like protease (3CLpro), are attractive antiviral drug targets because they are essential for coronaviral replication. Although the primary function of PLpro and 3CLpro are to process the viral polyprotein in a coordinated manner, PLpro has the additional function of stripping ubiquitin and ISG15 from host-cell proteins to aid coronaviruses in their evasion of the host innate immune responses.

Assay Data

Tris-Bis PAGE



SARS PLpro on Tris-Bis PAGE under reduced condition. The purity is greater than 95%.