

Human P-Selectin/CD62P Protein

Cat. No. SEL-HM10P

Description

Source	Recombinant Human P-Selectin/CD62P Protein is expressed from HEK293 with His tag at the C-terminus. It contains Trp42-Ala771.
Accession	P16109
Molecular Weight	The protein has a predicted MW of 81.05 kDa. Due to glycosylation, the protein migrates to 110-140 kDa based on Tris-Bis PAGE result.
Endotoxin	Less than 1EU per μg by the LAL method.
Purity	> 95% as determined by Tris-Bis PAGE > 95% as determined by HPLC

Formulation and Storage

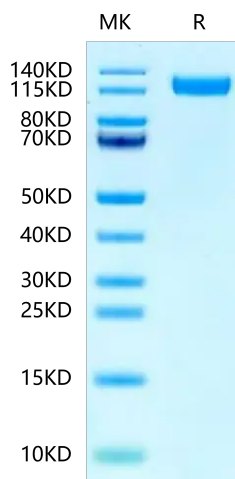
Formulation	Lyophilized from 0.22 μm filtered solution in PBS (pH 7.4). Normally 8% trehalose is added as protectant before lyophilization.
Reconstitution	Centrifuge the tube before opening. Reconstituting to a concentration more than 100 $\mu\text{g}/\text{ml}$ is recommended. Dissolve the lyophilized protein in distilled water.
Storage	-20 to -80°C for 12 months as supplied from date of receipt. -20 to -80°C for 3-6 months in unopened state after reconstitution. 2-8°C for 2-7 days after reconstitution. Recommend to aliquot the protein into smaller quantities for optimal storage. Please minimize freeze-thaw cycles.

Background

Human P-Selectin (GMP-140, LECAM-3, PADGEM, CD62P), a member of the Selectin family, is a cell surface glycoprotein expressed by activated platelets and endothelial cells. A SLe(x)-type proteoglycan, which through high affinity, calcium-dependent interactions with E-, P- and L-selectins, mediates rapid rolling of leukocytes over vascular surfaces during the initial steps in inflammation.

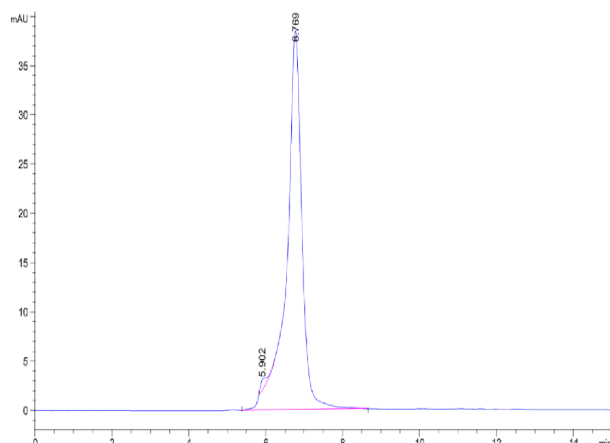
Assay Data

Tris-Bis PAGE



Human P-Selectin on Tris-Bis PAGE under reduced condition. The purity is greater than 95%.

SEC-HPLC



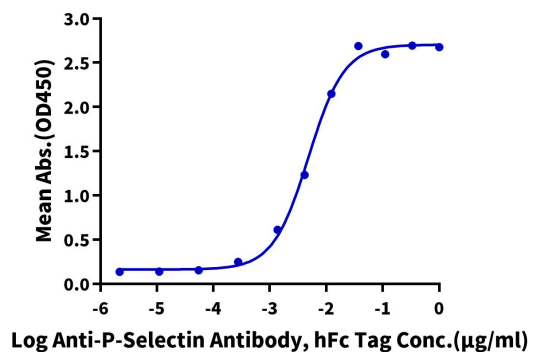
The purity of Human P-Selectin is greater than 95% as determined by SEC-HPLC.

Assay Data

ELISA Data

Human P-Selectin, His Tag ELISA

0.05µg Human P-Selectin, His Tag Per Well



Immobilized Human P-Selectin, His Tag at 0.5µg/ml (100µl/well) on the plate. Dose response curve for Anti-P-Selectin Antibody, hFc Tag with the EC50 of 4.9ng/ml determined by ELISA.