

# Cynomolgus SEZ6 Protein

Cat. No. SEZ-CM106



## Description

<b>Source</b>	Recombinant Cynomolgus SEZ6 Protein is expressed from Expi293 with His tag at the C-terminal. It contains Leu20-His927.
<b>Accession</b>	A0A2K5WPJ4
<b>Molecular Weight</b>	The protein has a predicted MW of 99.11 kDa. Due to glycosylation, the protein migrates to 150-180 kDa based on Tris-Bis PAGE result.
<b>Endotoxin</b>	Less than 1EU per $\mu\text{g}$ by the LAL method.
<b>Purity</b>	> 95% as determined by Tris-Bis PAGE > 95% as determined by HPLC

## Formulation and Storage

<b>Formulation</b>	Supplied as 0.22 $\mu\text{m}$ filtered solution in PBS (pH 7.4). Please dilute to the desired concentration according to the concentration of the solution shown on the product label.
<b>Storage</b>	Valid for 12 months from date of receipt when stored at -80°C. Recommend to aliquot the protein into smaller quantities for optimal storage. Please do not repeated freeze-thaw cycles.

## Background

Seizure-related protein 6 (Sez6) contributes to chronic pain development as sez6 knockout mice show attenuated pain behaviours after peripheral nerve injury, compared with control mice. The type I transmembrane isoform of Sez6 is cleaved by the  $\beta$ -amyloid precursor protein cleavage enzyme 1 (BACE1), resulting in Sez6 extracellular domain shedding from the neuron surface.

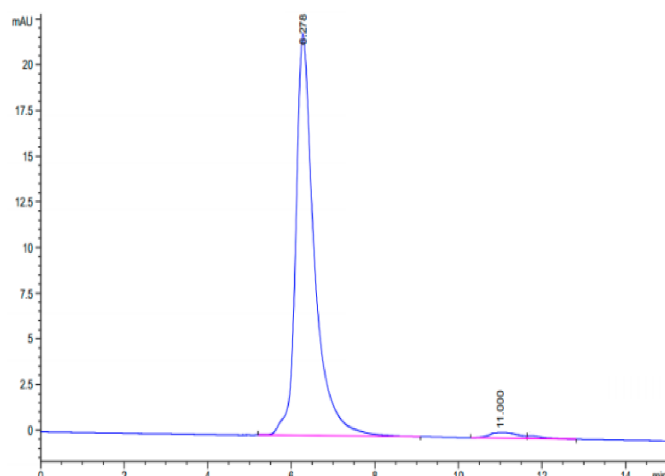
## Assay Data

### Tris-Bis PAGE



Cynomolgus SEZ6 on Tris-Bis PAGE under reduced condition. The purity is greater than 95%.

### SEC-HPLC



The purity of Cynomolgus SEZ6 is greater than 95% as determined by SEC-HPLC.

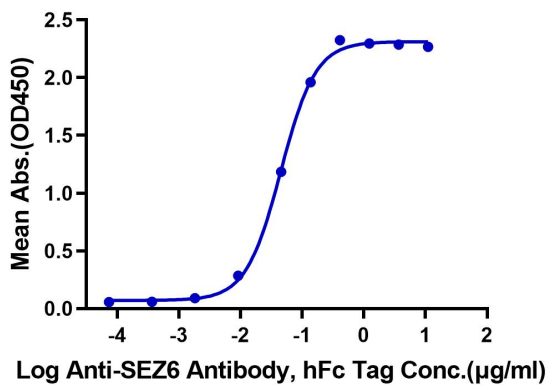
## ELISA Data

For Research Use Only

Assay Data

Cynomolgus SEZ6, His Tag ELISA

0.5µg Cynomolgus SEZ6, His Tag Per Well



Immobilized Cynomolgus SEZ6, His Tag at 5µg/ml (100µl/Well) on the plate. Dose response curve for Anti-SEZ6 Antibody, hFc Tag with the EC50 of 22.7ng/ml determined by ELISA.