

Human SEZ6L Protein

Cat. No. SEZ-HM10L



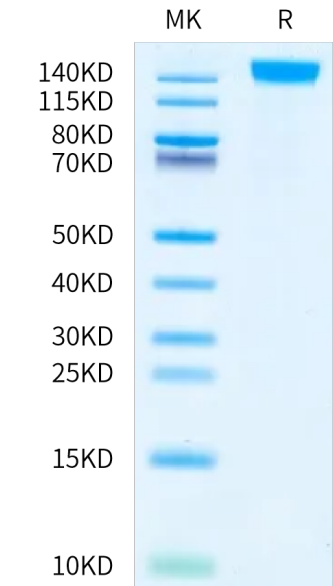
Description	
Source	Recombinant Human SEZ6L Protein is expressed from HEK293 with His tag at the C-terminus. It contains Leu29-Ala958.
Accession	Q9BYH1-1
Molecular Weight	The protein has a predicted MW of 103 kDa. Due to glycosylation, the protein migrates to 140-160 kDa based on Bis-Tris PAGE result.
Endotoxin	Less than 1 EU per µg by the LAL method.
Purity	> 95% as determined by Bis-Tris PAGE > 95% as determined by HPLC

Formulation and Storage	
Formulation	Lyophilized from 0.22 µm filtered solution in PBS (pH 7.4). Normally 8% trehalose is added as protectant before lyophilization.
Reconstitution	Dissolve the lyophilized protein in distilled water. Please refer to the Certificate of Analysis for detailed instructions.
Storage	-20 to -80°C for 12 months as supplied from date of receipt. -80°C for 3 months after reconstitution. Recommend to aliquot the protein into smaller quantities for optimal storage. Please minimize freeze-thaw cycles.

Background	
SEZ6L, or seizure-related 6-like protein, is a neuronal protein implicated in various neurological conditions. It plays a role in motor coordination and anxiety-related behavior in mice, with SEZ6L-deficient mice displaying motor phenotypes and increased anxiety. Additionally, SEZ6L is involved in synaptic connectivity regulation and has been associated with bipolar disorder. It interacts with BACE1, the protease linked to Alzheimer's disease, suggesting its role in neurodegenerative processes.	

Assay Data

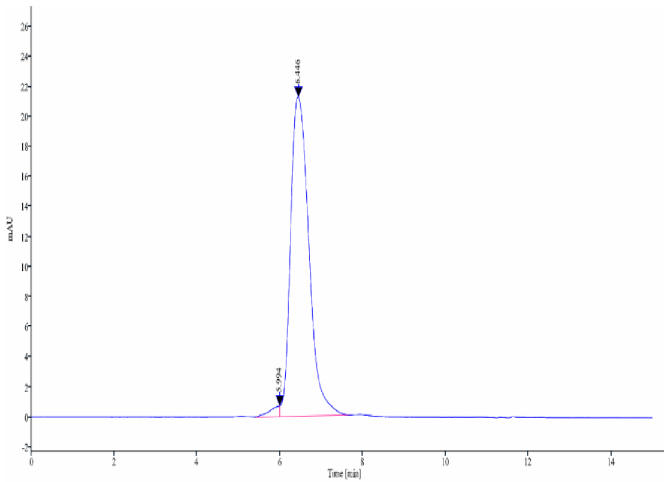
Bis-Tris PAGE



Human SEZ6L on Bis-Tris PAGE under reduced condition. The purity is greater than 95%.

SEC-HPLC

Assay Data



The purity of Human SEZ6L is greater than 95% as determined by SEC-HPLC.