

Human SEZ6L2 Protein

Cat. No. SEZ-HM1L2

Description

Source	Recombinant Human SEZ6L2 Protein is expressed from HEK293 with His tag at the C-Terminus. It contains Leu28-Asn844.
Accession	Q6UXD5-1
Molecular Weight	The protein has a predicted MW of 88.5 kDa. Due to glycosylation, the protein migrates to 120-140 kDa based on Bis-Tris PAGE result.
Endotoxin	Less than 1EU per µg by the LAL method.
Purity	> 95% as determined by Bis-Tris PAGE > 95% as determined by HPLC

Formulation and Storage

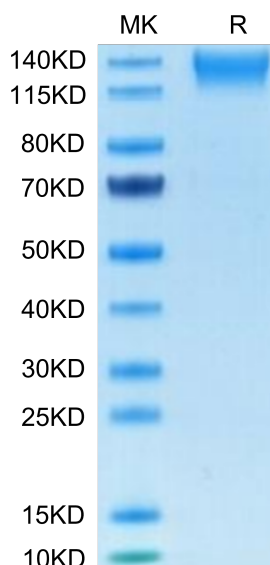
Formulation	Supplied as 0.22µm filtered solution in PBS (pH 7.4).
Storage	Valid for 12 months from date of receipt when stored at -80°C. Recommend to aliquot the protein into smaller quantities for optimal storage. Please minimize freeze-thaw cycles.

Background

Seizure-related 6 homolog (mouse)-like 2 (SEZ6L2) was shown to be involved in transcription of a type 1 transmembrane protein for regulating cell fate. SEZ6L2 was significantly up-regulated in tumour tissues of patients with CRC compared with adjacent normal tissues. Up-regulation of SEZ6L2 was correlated with a poor prognosis in patients with CRC. Furthermore, SEZ6L2 expression was inversely correlated with the expression of cytochrome C in malignant tissues in patients with CRC.

Assay Data

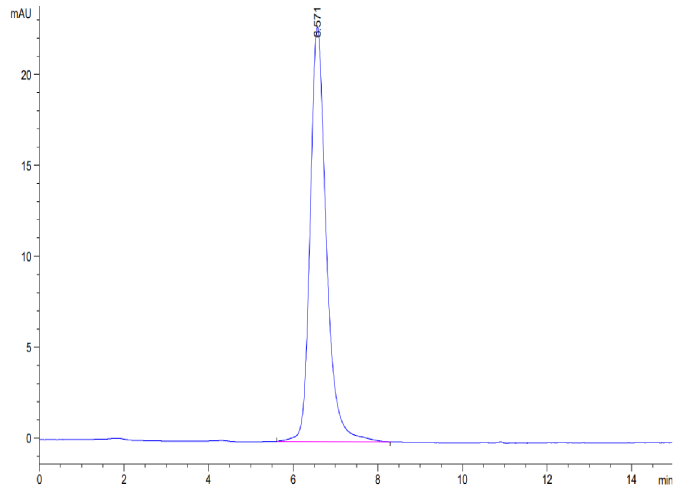
Bis-Tris PAGE



Human SEZ6L2 on Bis-Tris PAGE under reduced condition. The purity is greater than 95%.

SEC-HPLC

Assay Data



The purity of Human SEZ6L2 is greater than 95% as determined by SEC-HPLC.