

Human SEZ6 Protein

Cat. No. SEZ-HM206

Description

Source	Recombinant Human SEZ6 Protein is expressed from HEK293 with hFc tag at the C-Terminus. It contains Leu20-His925.
Accession	Q53EL9-1
Molecular Weight	The protein has a predicted MW of 124.53 kDa. Due to glycosylation, the protein migrates to 140-200 kDa based on Tris-Bis PAGE result.
Endotoxin	Less than 1EU per µg by the LAL method.
Purity	> 95% as determined by Tris-Bis PAGE

Formulation and Storage

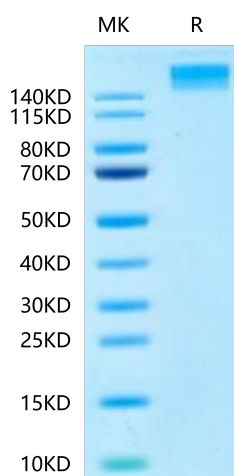
Formulation	Lyophilized from 0.22 µm filtered solution in PBS (pH 7.4). Normally 8% trehalose is added as protectant before lyophilization.
Reconstitution	Centrifuge the tube before opening. Reconstituting to a concentration more than 100 µg/ml is recommended. Dissolve the lyophilized protein in distilled water.
Storage	-20 to -80°C for 12 months as supplied from date of receipt. -20 to -80°C for 3-6 months in unopened state after reconstitution. 2-8°C for 2-7 days after reconstitution. Recommend to aliquot the protein into smaller quantities for optimal storage. Please minimize freeze-thaw cycles.

Background

Seizure-related protein 6 (Sez6) contributes to chronic pain development as sez6 knockout mice show attenuated pain behaviours after peripheral nerve injury, compared with control mice. The type I transmembrane isoform of Sez6 is cleaved by the β -amyloid precursor protein cleavage enzyme 1 (BACE1), resulting in Sez6 extracellular domain shedding from the neuron surface.

Assay Data

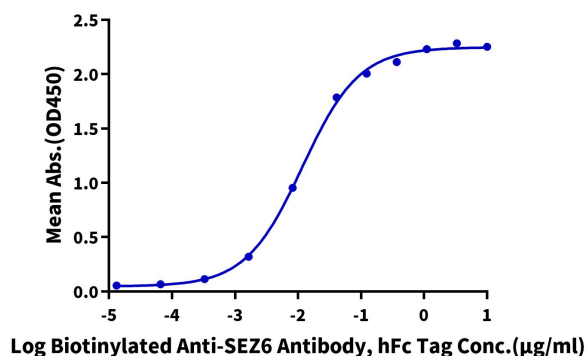
Tris-Bis PAGE



Human SEZ6 on Tris-Bis PAGE under reduced condition. The purity is greater than 95%.

ELISA Data

Human SEZ6, hFc Tag ELISA
0.2µg Human SEZ6, hFc Tag Per Well



Immobilized Human SEZ6, hFc Tag at 2µg/ml (100µl/well) on the plate. Dose response curve for Biotinylated Anti-SEZ6 Antibody, hFc Tag with the EC50 of 11.8ng/ml determined by ELISA.