

Biotinylated Human SEZ6 Protein

Cat. No. SEZ-HM406B

Description

Source	Recombinant Biotinylated Human SEZ6 Protein is expressed from HEK293 with His tag and Avi tag at the C-terminus. It contains Leu20-His925.
Accession	Q53EL9-1
Molecular Weight	The protein has a predicted MW of 100.7 kDa. Due to glycosylation, the protein migrates to 170-200 kDa based on Tris-Bis PAGE result.
Endotoxin	Less than 1EU per μg by the LAL method.
Purity	> 95% as determined by Tris-Bis PAGE > 95% as determined by HPLC

Formulation and Storage

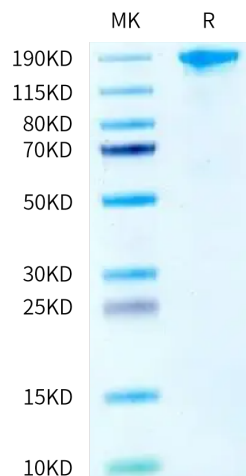
Formulation	Lyophilized from 0.22 μm filtered solution in PBS (pH 7.4). Normally 8% trehalose is added as protectant before lyophilization.
Reconstitution	Centrifuge the tube before opening. Reconstituting to a concentration more than 100 $\mu\text{g}/\text{ml}$ is recommended. Dissolve the lyophilized protein in distilled water.
Storage	-20 to -80°C for 12 months as supplied from date of receipt. -20 to -80°C for 3-6 months in unopened state after reconstitution. 2-8°C for 2-7 days after reconstitution. Recommend to aliquot the protein into smaller quantities for optimal storage. Please minimize freeze-thaw cycles.

Background

Seizure-related protein 6 (Sez6) contributes to chronic pain development as sez6 knockout mice show attenuated pain behaviours after peripheral nerve injury, compared with control mice. The type I transmembrane isoform of Sez6 is cleaved by the β -amyloid precursor protein cleavage enzyme 1 (BACE1), resulting in Sez6 extracellular domain shedding from the neuron surface.

Assay Data

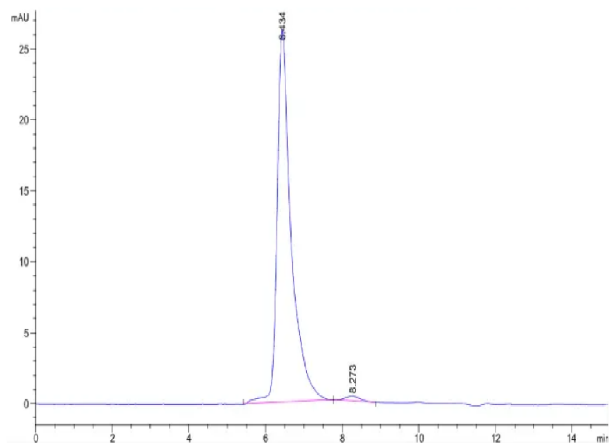
Tris-Bis PAGE



Biotinylated Human SEZ6 on Tris-Bis PAGE under reduced condition. The purity is greater than 95%.

SEC-HPLC

Assay Data



The purity of Biotinylated Human SEZ6 is greater than 95% as determined by SEC-HPLC.

Biotinylated Human SEZ6 Protein

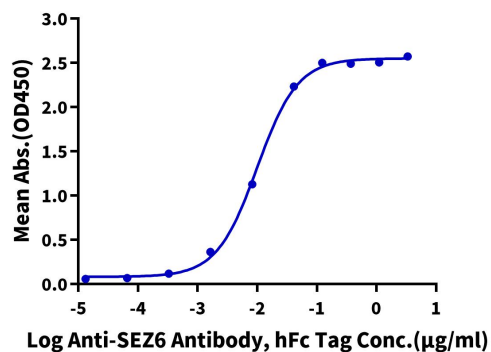
Cat. No. SEZ-HM406B

Assay Data

ELISA Data

Biotinylated Human SEZ6, His Tag ELISA

0.2µg Biotinylated Human SEZ6, His Tag Per Well



Immobilized Biotinylated Human SEZ6, His Tag at 2µg/ml (100µl/well) on the streptavidin precoated plate (5µg/ml). Dose response curve for Anti-SEZ6 Antibody, hFc Tag with the EC50 of 10.0ng/ml determined by ELISA.