

# Biotinylated Human SEZ6 Sushi4 Domain Protein

Cat. No. SEZ-HM40DB

## Description

<b>Source</b>	Recombinant Biotinylated Human SEZ6 Sushi4 Domain Protein is expressed from HEK293 with His tag and Avi tag at the C-terminus. It contains Leu750-Cys813.
<b>Accession</b>	Q53EL9-1
<b>Molecular Weight</b>	The protein has a predicted MW of 10.42 kDa. Due to glycosylation, the protein migrates to 11-15 kDa based on Bis-Tris PAGE result.
<b>Endotoxin</b>	Less than 1 EU per $\mu\text{g}$ by the LAL method.
<b>Purity</b>	> 95% as determined by Bis-Tris PAGE > 95% as determined by HPLC

## Formulation and Storage

<b>Formulation</b>	Lyophilized from 0.22 $\mu\text{m}$ filtered solution in PBS (pH 7.4). Normally 8% trehalose is added as protectant before lyophilization.
<b>Reconstitution</b>	Dissolve the lyophilized protein in distilled water. Please refer to the Certificate of Analysis for detailed instructions.
<b>Storage</b>	-20 to -80°C for 12 months as supplied from date of receipt. -80°C for 3 months after reconstitution. Recommend to aliquot the protein into smaller quantities for optimal storage. Please minimize freeze-thaw cycles.

## Background

Seizure-related protein 6 (Sez6) contributes to chronic pain development as sez6 knockout mice show attenuated pain behaviours after peripheral nerve injury, compared with control mice. The type I transmembrane isoform of Sez6 is cleaved by the  $\beta$ -amyloid precursor protein cleavage enzyme 1 (BACE1), resulting in Sez6 extracellular domain shedding from the neuron surface.

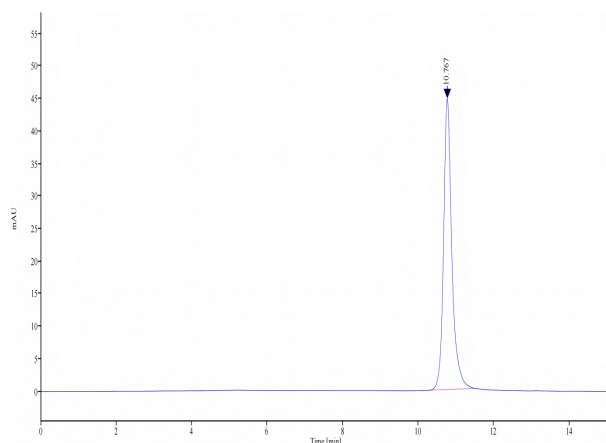
## Assay Data

### Bis-Tris PAGE



Biotinylated Human SEZ6 Sushi4 Domain on Bis-Tris PAGE under reduced condition. The purity is greater than 95%.

### SEC-HPLC



The purity of Biotinylated Human SEZ6 Sushi4 Domain is greater than 95% as determined by SEC-HPLC.

# Biotinylated Human SEZ6 Sushi4 Domain Protein

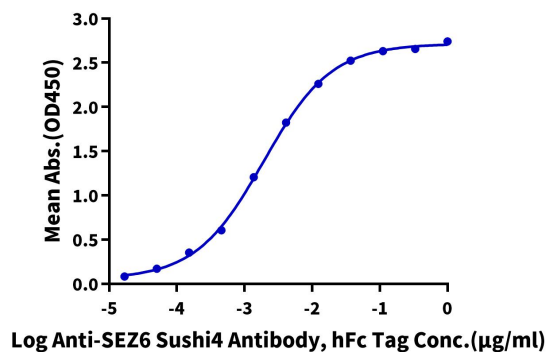
Cat. No. SEZ-HM40DB

## Assay Data

### ELISA Data

#### Biotinylated Human SEZ6 Sushi4 Domain, His Avi Tag ELISA

0.05 $\mu$ g Biotinylated Human SEZ6 Sushi4 Domain, His Avi Tag Per Well



Immobilized Biotinylated Human SEZ6 Sushi4 Domain, His Avi Tag at 0.5 $\mu$ g/ml (100 $\mu$ l/well) on the streptavidin precoated plate (5 $\mu$ g/ml). Dose response curve for Anti-SEZ6 Sushi4 Antibody, hFc Tag with the EC50 of 1.9ng/ml determined by ELISA.