

## Mouse SEZ6 Protein

Cat. No. SEZ-MM106

### Description

<b>Source</b>	Recombinant Mouse SEZ6 Protein is expressed from Expi293 with His tag at the C-terminal. It contains Leu20-His922.
<b>Accession</b>	Q7TSK2
<b>Molecular Weight</b>	The protein has a predicted MW of 98.8 kDa. Due to glycosylation, the protein migrates to 145-150 kDa based on Tris-Bis PAGE result.
<b>Endotoxin</b>	Less than 1EU per µg by the LAL method.
<b>Purity</b>	> 95% as determined by Tris-Bis PAGE > 95% as determined by HPLC

### Formulation and Storage

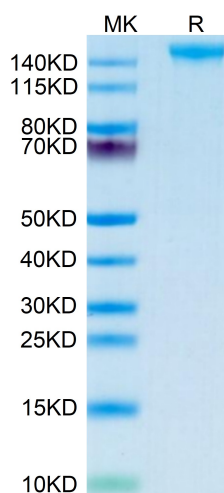
<b>Formulation</b>	Supplied as 0.22µm filtered solution in PBS (pH 7.4). Please dilute to the desired concentration according to the concentration of the solution shown on the product label.
<b>Storage</b>	Valid for 12 months from date of receipt when stored at -80°C. Recommend to aliquot the protein into smaller quantities for optimal storage. Please do not repeated freeze-thaw cycles.

### Background

Seizure-related protein 6 (Sez6) contributes to chronic pain development as sez6 knockout mice show attenuated pain behaviours after peripheral nerve injury, compared with control mice. The type I transmembrane isoform of Sez6 is cleaved by the  $\beta$ -amyloid precursor protein cleavage enzyme 1 (BACE1), resulting in Sez6 extracellular domain shedding from the neuron surface.

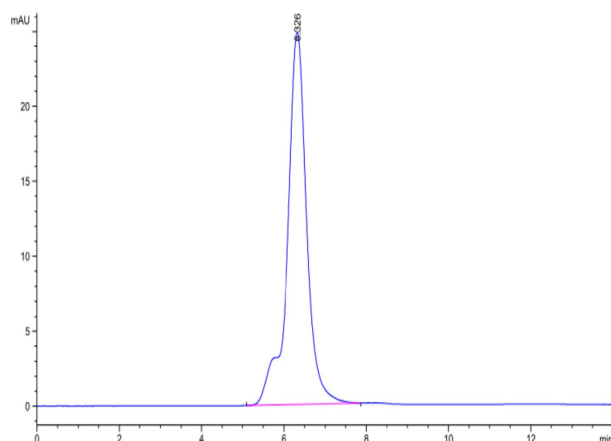
### Assay Data

#### Tris-Bis PAGE



Mouse SEZ6 on Tris-Bis PAGE under reduced condition. The purity is greater than 95%.

#### SEC-HPLC



The purity of Mouse SEZ6 is greater than 95% as determined by SEC-HPLC.