

# Mouse Serpin F1/PEDF Protein

Cat. No. SF1-MM101

## Description

<b>Source</b>	Recombinant Mouse Serpin F1/PEDF Protein is expressed from HEK293 with His tag at the C-Terminus. It contains Gln20-Thr417.
<b>Accession</b>	P97298
<b>Molecular Weight</b>	The protein has a predicted MW of 45.4 kDa. Due to glycosylation, the protein migrates to 48-55 kDa based on Bis-Tris PAGE result.
<b>Endotoxin</b>	Less than 1EU per $\mu\text{g}$ by the LAL method.
<b>Purity</b>	> 95% as determined by Bis-Tris PAGE > 95% as determined by HPLC

## Formulation and Storage

<b>Formulation</b>	Supplied as 0.22 $\mu\text{m}$ filtered solution in 20mM Tris, 500mM NaCl (pH 8.0).
<b>Storage</b>	Valid for 12 months from date of receipt when stored at -80°C. Recommend to aliquot the protein into smaller quantities for optimal storage. Please minimize freeze-thaw cycles.

## Background

Pigment epithelium-derived factor (PEDF) is an important antiangiogenic and antitumorigenic factor in a variety of cancer forms, including pancreatic cancer. PEDF is mainly secreted as a soluble monomeric glycoprotein. In human pancreatic cancer PEDF levels are decreased, both in the tissue and serum. The decrease is associated with increased tumor angiogenesis, fibrosis, inflammation, autophagy, occurrence of liver metastasis and worse prognosis.

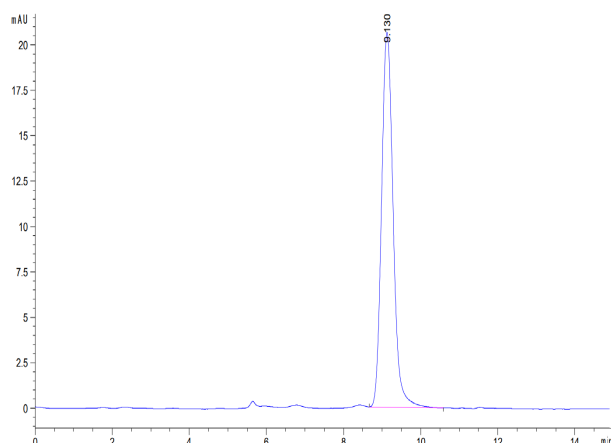
## Assay Data

### Bis-Tris PAGE



Mouse Serpin F1 on Bis-Tris PAGE under reduced condition. The purity is greater than 95%.

### SEC-HPLC



The purity of Mouse Serpin F1 is greater than 95% as determined by SEC-HPLC.