

Human Sonic Hedgehog (Shh) Protein

Cat. No. SHH-HE001

Description

Source	Recombinant Human Sonic Hedgehog (Shh) Protein is expressed from E.coli without tag. It contains Cys24-Gly197.
Accession	Q15465
Molecular Weight	The protein has a predicted MW of 19.79 kDa kDa. The protein migrates to 23-25 kDa based on Bis-Tris PAGE result.
Endotoxin	Less than 0.05EU per μ g by the LAL method.
Purity	> 95% as determined by Bis-Tris PAGE > 95% as determined by HPLC

Formulation and Storage

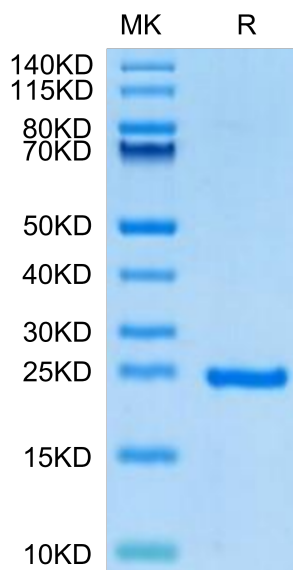
Formulation	Supplied as 0.22 μ m filtered solution in PBS, 300mM NaCl (pH 7.4).
Storage	Valid for 12 months from date of receipt when stored at -80°C. Recommend to aliquot the protein into smaller quantities for optimal storage. Please minimize freeze-thaw cycles.

Background

Sonic hedgehog (Shh) is a secreted protein with important roles in mammalian embryogenesis. During tooth development, Shh is primarily expressed in the dental epithelium, from initiation to the root formation stages.

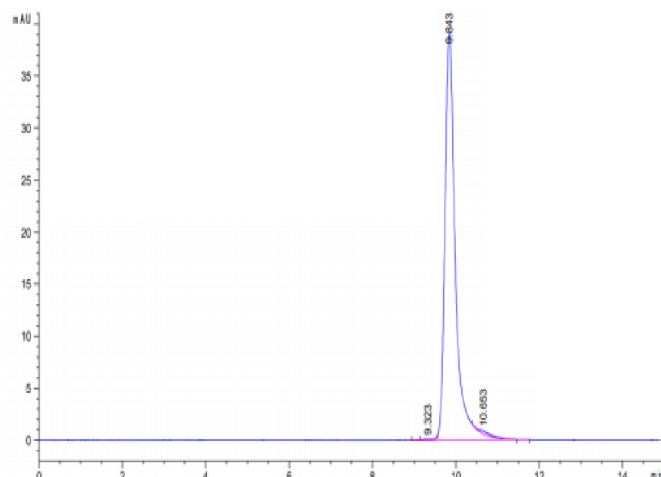
Assay Data

Bis-Tris PAGE



Human Sonic Hedgehog (Shh) on Bis-Tris PAGE under reduced condition. The purity is greater than 95%.

SEC-HPLC



The purity of Human Sonic Hedgehog (Shh) is greater than 95% as determined by SEC-HPLC.