

# Cynomolgus Siglec-15/CD33L3 Protein

Cat. No. SIG-CM415

## Description

<b>Source</b>	Recombinant Cynomolgus Siglec-15/CD33L3 Protein is expressed from Expi293 with His and Avi tag at the C-terminal. It contains Met60-Thr322.
<b>Accession</b>	XP_005586866.2
<b>Molecular Weight</b>	The protein has a predicted MW of 29.2 kDa. Due to glycosylation, the protein migrates to 33-43 kDa based on Tris-Bis PAGE result.
<b>Endotoxin</b>	Less than 1EU per µg by the LAL method.
<b>Purity</b>	> 95% as determined by Tris-Bis PAGE > 95% as determined by HPLC

## Formulation and Storage

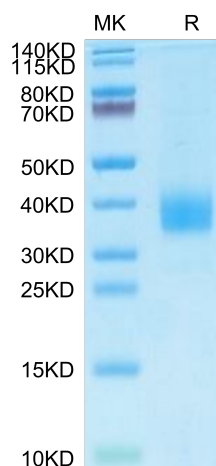
<b>Formulation</b>	Lyophilized from 0.22µm filtered solution in 20mM PB, 500mM NaCl, 0.1M L-arginine (pH 6.0). Normally 5% trehalose is added as protectant before lyophilization.
<b>Reconstitution</b>	Centrifuge tubes before opening. Reconstituting to a concentration more than 100 µg/ml is recommended (usually we use 1mg/ml solution for lyophilization). Dissolve the lyophilized protein in 20mM PB, 0.5M NaCl, 5% glycerol, 0.1M L-Arginine (pH 6.0).
<b>Storage</b>	-20 to -80°C for 12 months as supplied from date of receipt. -20 to -80°C for 3-6 months in unopened state after reconstitution. 2-8°C for 2-7 days after reconstitution. Recommend to aliquot the protein into smaller quantities for optimal storage. Please avoid freeze-thaw cycles.

## Background

Siglec-15 is a transmembrane glycoprotein in the Siglec family of sialic acid-binding immune regulatory molecules. Mature human Siglec-15 consists of a 244 amino acid extracellular domain (ECD) with two Ig-like domains, a 21 aa transmembrane segment, and a 44 aa cytoplasmic domain. Siglec-15 is a potential therapeutic target for osteoporosis and plays a conserved regulatory role in the immune system of vertebrates.

## Assay Data

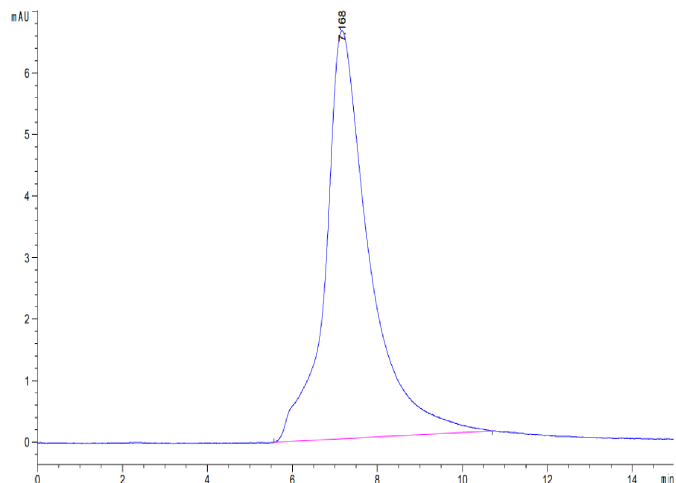
### Tris-Bis PAGE



Cynomolgus Siglec-15 on Tris-Bis PAGE under reduced condition. The purity is greater than 95%.

### SEC-HPLC

Assay Data

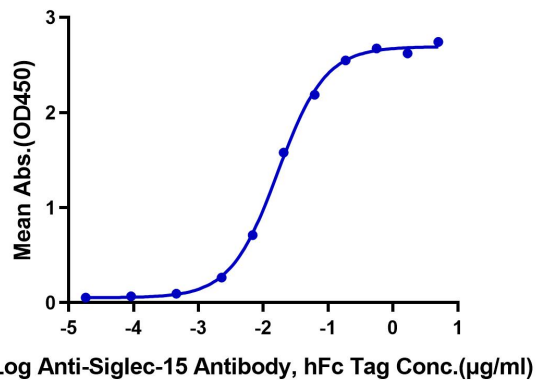


The purity of Cynomolgus Siglec-15 is greater than 95% as determined by SEC-HPLC.

ELISA Data

**Cynomolgus Siglec-15, His Tag ELISA**

0.05µg Cynomolgus Siglec-15, His Tag Per Well



Immobilized Cynomolgus Siglec-15, His Tag at 0.5µg/ml (100µl/Well) on the plate. Dose response curve for Anti-Siglec-15 Antibody, hFc Tag with the EC50 of 16.7ng/ml determined by ELISA.