

# Biotinylated Cynomolgus Siglec-15/CD33L3 Protein

Cat. No. SIG-CM415B

## Description

<b>Source</b>	Recombinant Biotinylated Cynomolgus Siglec-15/CD33L3 Protein is expressed from HEK293 with His and Avi tag at the C-Terminus. It contains Met60-Thr322.
<b>Accession</b>	XP_005586866.2
<b>Molecular Weight</b>	The protein has a predicted MW of 29.2 kDa. Due to glycosylation, the protein migrates to 33-43 kDa based on Tris-Bis PAGE result.
<b>Endotoxin</b>	Less than 1EU per $\mu\text{g}$ by the LAL method.
<b>Purity</b>	> 95% as determined by Tris-Bis PAGE > 95% as determined by HPLC

## Formulation and Storage

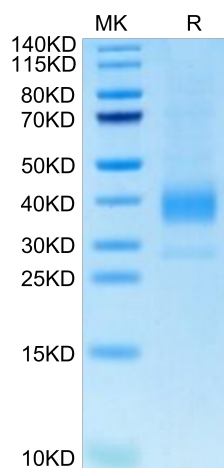
<b>Formulation</b>	Supplied as 0.22 $\mu\text{m}$ filtered solution in 20mM PB, 500mM NaCl, 0.1M L-arginine (pH 6.0).
<b>Storage</b>	Valid for 12 months from date of receipt when stored at -80°C. Recommend to aliquot the protein into smaller quantities for optimal storage. Please minimize freeze-thaw cycles.

## Background

Siglec-15 is a transmembrane glycoprotein in the Siglec family of sialic acid-binding immune regulatory molecules. Mature human Siglec-15 consists of a 244 amino acid extracellular domain (ECD) with two Ig-like domains, a 21 aa transmembrane segment, and a 44 aa cytoplasmic domain. Siglec-15 is a potential therapeutic target for osteoporosis and plays a conserved regulatory role in the immune system of vertebrates.

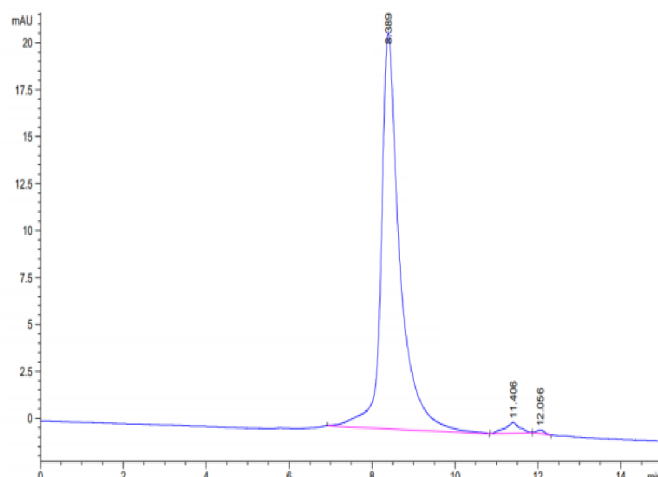
## Assay Data

### Tris-Bis PAGE



Biotinylated Cynomolgus Siglec-15 on Tris-Bis PAGE under reduced condition. The purity is greater than 95%.

### SEC-HPLC



The purity of Biotinylated Cynomolgus Siglec-15 is greater than 95% as determined by SEC-HPLC.

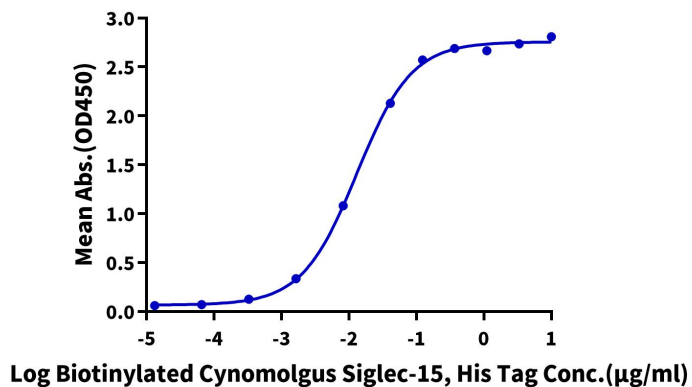
## ELISA Data

For Research Use Only

Assay Data

**Biotinylated Cynomolgus Siglec-15, His Tag ELISA**

0.2µg Anti-Siglec-15 Antibody, hFc Tag Per Well



Immobilized Anti-Siglec-15 Antibody, hFc Tag at 2µg/ml (100µl/well) on the plate. Dose response curve for Biotinylated Cynomolgus Siglec-15, His Tag with the EC50 of 13.2ng/ml determined by ELISA.