

Human Siglec-3/CD33 Protein, Ultra Low Endotoxin

Cat. No. SIG-HM203-UL

Description

| | |
|-------------------------|--|
| Source | Recombinant Human Siglec-3/CD33 Protein is expressed from HEK293 with hFc (IgG1) tag at the C-Terminus. It contains Asp18-His259. |
| Accession | P20138-1 |
| Molecular Weight | The protein has a predicted MW of 53.6 kDa. Due to glycosylation, the protein migrates to 68-80 kDa based on Bis-Tris PAGE result. |
| Endotoxin | Less than 0.01 EU per µg by the LAL method. |
| Purity | > 95% as determined by Bis-Tris PAGE > 95% as determined by HPLC |

Formulation and Storage

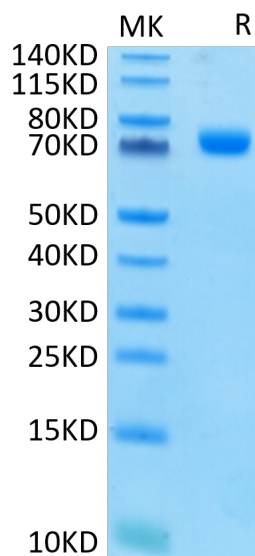
| | |
|-----------------------|---|
| Formulation | Lyophilized from 0.22µm filtered solution in PBS (pH 7.4). Normally 8% trehalose is added as protectant before lyophilization. |
| Reconstitution | Dissolve the lyophilized protein in distilled water. Please refer to the Certificate of Analysis for detailed instructions. |
| Storage | -20 to -80°C for 12 months as supplied from date of receipt. -80°C for 3 months after reconstitution. Recommend to aliquot the protein into smaller quantities for optimal storage. Please minimize freeze-thaw cycles. |

Background

CD33 (siglec-3), a well-known target in leukemia therapy, is an inhibitory sialoadhesin expressed in human leukocytes of the myeloid lineage and some lymphoid subsets, including NK cells. CD33 is the smallest siglec member. It preferentially binds to α 2-6- and α 2-3-sialylated glycans and strongly binds to sialylated ligands on leukemic cell lines.

Assay Data

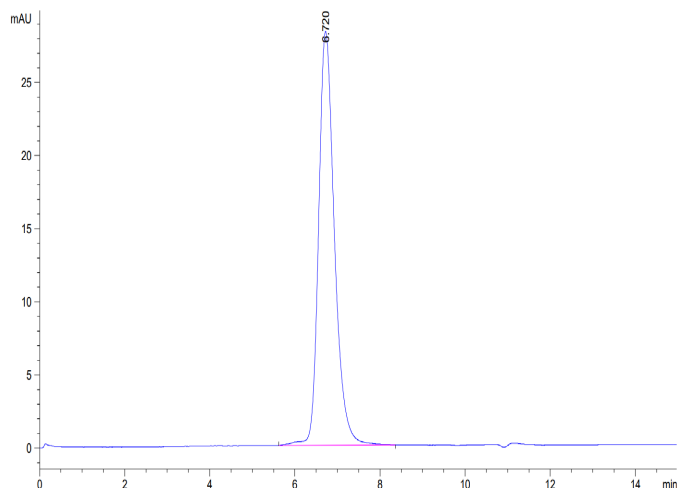
Bis-Tris PAGE



Human Siglec-3 on Bis-Tris PAGE under reduced conditions. The purity is greater than 95%.

SEC-HPLC

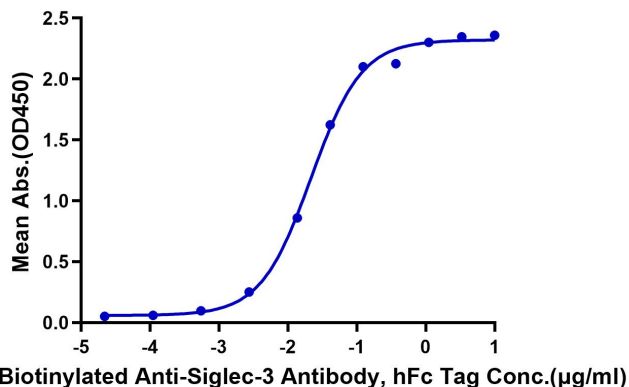
Assay Data



The purity of Human Siglec-3 is greater than 95% as determined by SEC-HPLC.

ELISA Data

Human Siglec-3, hFc Tag ELISA
0.05µg Human Siglec-3, hFc Tag Per Well



Immobilized Human Siglec-3, hFc Tag at 0.5µg/ml (100µl/well) on the plate. Dose response curve for Biotinylated Anti-Siglec-3 Antibody, hFc Tag with the EC50 of 21.8ng/ml determined by ELISA.