

# Human Siglec-2/CD22 Protein

Cat. No. SIG-HM222



## Description

<b>Source</b>	Recombinant Human Siglec-2/CD22 Protein is expressed from HEK293 with hFc tag at the C-Terminus. It contains Asp20-Arg687.
<b>Accession</b>	P20273-1
<b>Molecular Weight</b>	The protein has a predicted MW of 101.9 kDa. Due to glycosylation, the protein migrates to 120-130 kDa based on Bis-Tris PAGE result.
<b>Endotoxin</b>	Less than 1EU per µg by the LAL method.
<b>Purity</b>	> 95% as determined by Bis-Tris PAGE > 95% as determined by HPLC

## Formulation and Storage

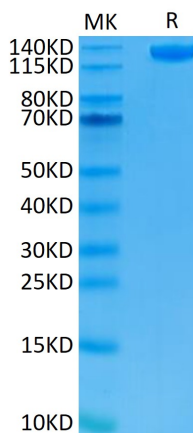
<b>Formulation</b>	Lyophilized from 0.22µm filtered solution in PBS (pH 7.4). Normally 8% trehalose is added as protectant before lyophilization.
<b>Reconstitution</b>	Centrifuge the tube before opening. Reconstituting to a concentration more than 100 µg/ml is recommended. Dissolve the lyophilized protein in distilled water.
<b>Storage</b>	-20 to -80°C for 12 months as supplied from date of receipt. -80°C for 3 months after reconstitution. Recommend to aliquot the protein into smaller quantities for optimal storage. Please minimize freeze-thaw cycles.

## Background

CD22, or cluster of differentiation-22, is a molecule belonging to the SIGLEC family of lectins. It is found on the surface of mature B cells and to a lesser extent on some immature B cells. CD22 a member of the immunoglobulin superfamily. CD22 functions as an inhibitory receptor for B cell receptor (BCR) signaling. It is also involved in the B cell trafficking to Peyer's patches in mice.

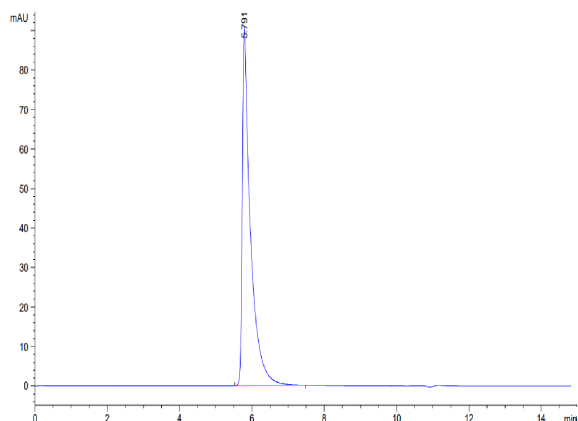
## Assay Data

### Bis-Tris PAGE



Human Siglec-2 on Bis-Tris PAGE under reduced condition. The purity is greater than 95%.

### SEC-HPLC



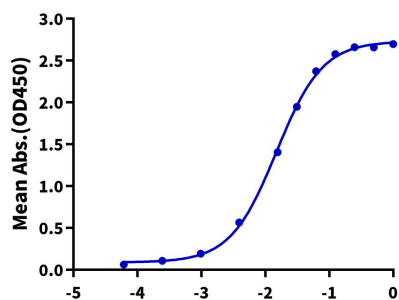
The purity of Human Siglec-2 is greater than 95% as determined by SEC-HPLC

Assay Data

ELISA Data

**Human Siglec-2, hFc Tag ELISA**

0.2µg Human Siglec-2, hFc Tag Per Well



Immobilized Human Siglec-2, hFc Tag at 2µg/ml (100µl/well) on the plate. Dose response curve for Biotinylated Anti-Siglec-2 Antibody, hFc Tag with the EC50 of 14.9ng/ml determined by ELISA (QC Test).

Log Biotinylated Anti-Siglec-2 Antibody, hFc Tag Conc. (µg/ml)