

Biotinylated Human Siglec-10 Protein

Cat. No. SIG-HM410B

Description

Source	Recombinant Biotinylated Human Siglec-10 Protein is expressed from HEK293 with His tag and Avi tag at the C-Terminus. It contains Met17-Thr546.
Accession	Q96LC7-1
Molecular Weight	The protein has a predicted MW of 61.13 kDa. Due to glycosylation, the protein migrates to 70-80 kDa based on Bis-Tris PAGE result.
Endotoxin	Less than 1EU per μg by the LAL method.
Purity	> 95% as determined by Bis-Tris PAGE > 95% as determined by HPLC

Formulation and Storage

Formulation	Supplied as 0.22 μm filtered solution in 20mM Tris, 500mM NaCl, 200mM Arginine (pH 8.5).
Storage	Valid for 12 months from date of receipt when stored at -80°C. Recommend to aliquot the protein into smaller quantities for optimal storage. Please minimize freeze-thaw cycles.

Background

Siglec-10 is a ligand for CD52, the target of the therapeutic monoclonal antibody Alemtuzumab. It is also reported to bind to Vascular adhesion protein 1 (VAP-1) and to the co-stimulatory molecule CD24 also known as HSA (Heat-stable antigen). Siglecs (sialic acid binding Ig-like lectins) are I-type lectins that belong to the immunoglobulin superfamily. They are characterized by an N-terminal Ig-like V-type domain which mediates sialic acid binding, followed by a varying number of Ig-like C2-type domains. Siglecs 5-11 constitute the CD33/Siglec-3 related group, and are differentially expressed in the hematopoietic system.

Assay Data

Bis-Tris PAGE



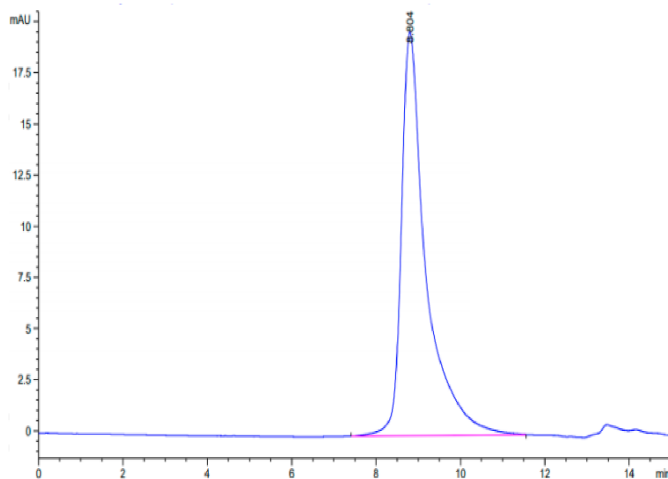
Biotinylated Human Siglec-10 on Bis-Tris PAGE under reduced condition. The purity is greater than 95%.

SEC-HPLC

Biotinylated Human Siglec-10 Protein

Cat. No. SIG-HM410B

Assay Data

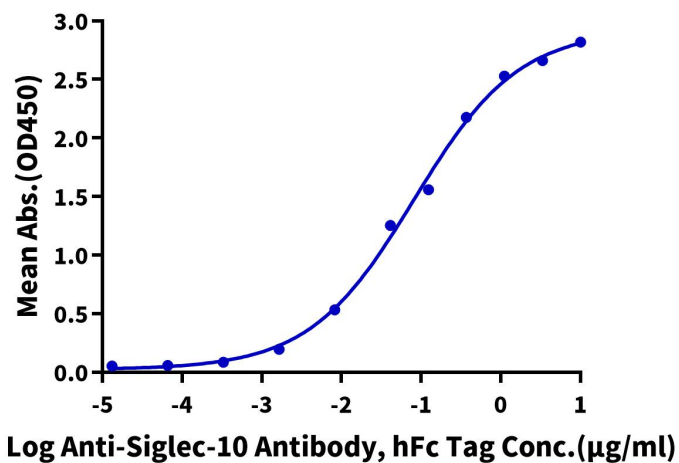


The purity of Biotinylated Human Siglec-10 is greater than 95% as determined by SEC-HPLC.

ELISA Data

Biotinylated Human Siglec-10, His Tag ELISA

0.2µg Biotinylated Human Siglec-10, His Tag Per Well



Immobilized Biotinylated Human Siglec-10, His Tag at 2µg/ml (100µl/Well) on streptavidin (5µg/ml) precoated plate. Dose response curve for Anti-Siglec-10 Antibody, hFc Tag with the EC50 of 81.3ng/ml determined by ELISA.