

# Biotinylated Human Siglec-10 Protein

Cat. No. SIG-HM410B

## Description

<b>Source</b>	Recombinant Biotinylated Human Siglec-10 Protein is expressed from HEK293 with His tag and Avi tag at the C-Terminus. It contains Met17-Thr546.
<b>Accession</b>	Q96LC7-1
<b>Molecular Weight</b>	The protein has a predicted MW of 61.13 kDa. Due to glycosylation, the protein migrates to 70-80 kDa based on Tris-Bis PAGE result.
<b>Endotoxin</b>	Less than 1EU per µg by the LAL method.
<b>Purity</b>	> 95% as determined by Tris-Bis PAGE > 95% as determined by HPLC

## Formulation and Storage

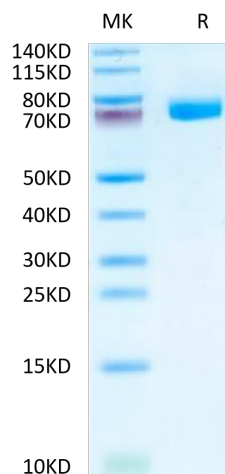
<b>Formulation</b>	Lyophilized from 0.22µm filtered solution in 20mM Tris, 150mM NaCl, 200mM Arginine (pH 8.5). Normally 8% trehalose is added as protectant before lyophilization.
<b>Reconstitution</b>	Centrifuge the tube before opening. Reconstituting to a concentration more than 100 µg/ml is recommended. Dissolve the lyophilized protein in distilled water.
<b>Storage</b>	-20 to -80°C for 12 months as supplied from date of receipt. -20 to -80°C for 3-6 months in unopened state after reconstitution. 2-8°C for 2-7 days after reconstitution. Recommend to aliquot the protein into smaller quantities for optimal storage. Please minimize freeze-thaw cycles.

## Background

Siglec-10 is a ligand for CD52, the target of the therapeutic monoclonal antibody Alemtuzumab. It is also reported to bind to Vascular adhesion protein 1 (VAP-1) and to the co-stimulatory molecule CD24 also known as HSA (Heat-stable antigen). Siglecs (sialic acid binding Ig-like lectins) are I-type lectins that belong to the immunoglobulin superfamily. They are characterized by an N-terminal Ig-like V-type domain which mediates sialic acid binding, followed by a varying number of Ig-like C2-type domains. Siglecs 5-11 constitute the CD33/Siglec-3 related group, and are differentially expressed in the hematopoietic system.

## Assay Data

### Tris-Bis PAGE



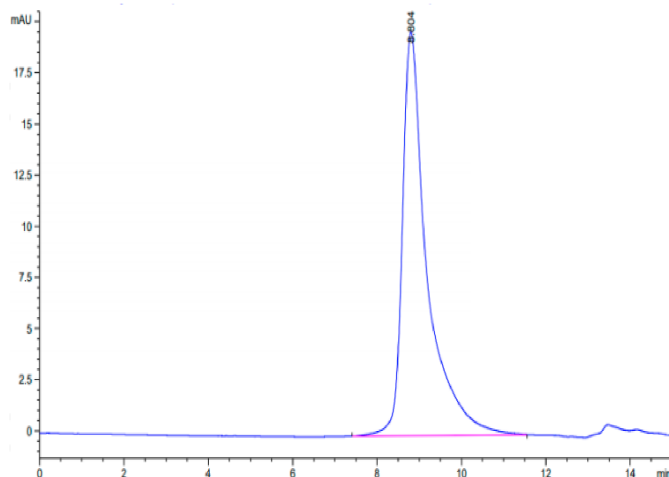
Biotinylated Human Siglec-10 on Tris-Bis PAGE under reduced condition. The purity is greater than 95%.

### SEC-HPLC

# Biotinylated Human Siglec-10 Protein

Cat. No. SIG-HM410B

## Assay Data

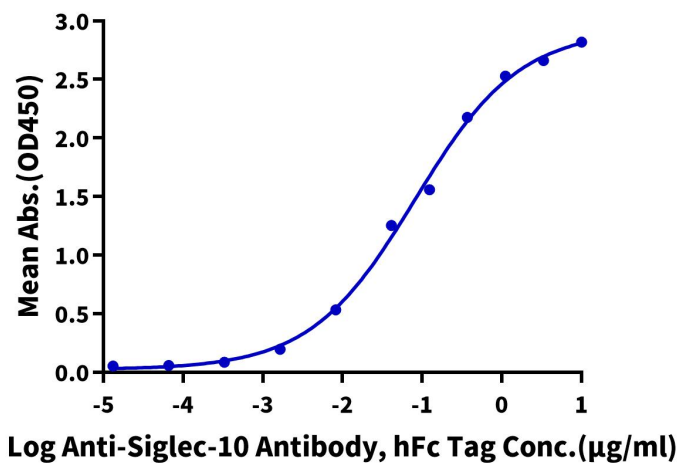


The purity of Biotinylated Human Siglec-10 is greater than 95% as determined by SEC-HPLC.

## ELISA Data

### Biotinylated Human Siglec-10, His Tag ELISA

0.2µg Biotinylated Human Siglec-10, His Tag Per Well



Immobilized Biotinylated Human Siglec-10, His Tag at 2µg/ml (100µl/Well) on streptavidin (5µg/ml) precoated plate. Dose response curve for Anti-Siglec-10 Antibody, hFc Tag with the EC50 of 81.3ng/ml determined by ELISA.