

Human Siglec-10 (R119A) Protein

Cat. No. SIG-HM411



Description

Source	Recombinant Human Siglec-10 (R119A) Protein is expressed from HEK293 with His tag and Avi tag at the C-Terminus. It contains Met17-Thr546.
Accession	Q96LC7-1
Molecular Weight	The protein has a predicted MW of 62.64 kDa. Due to glycosylation, the protein migrates to 65-80 kDa based on Bis-Tris PAGE result.
Endotoxin	Less than 1EU per ug by the LAL method.
Purity	> 95% as determined by Bis-Tris PAGE > 95% as determined by HPLC

Formulation and Storage

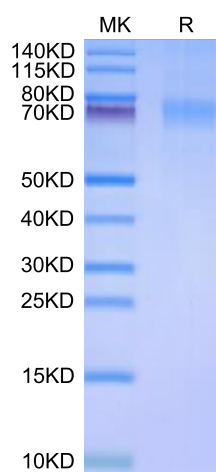
Formulation	Supplied as 0.22µm filtered solution in 20mM Tris,150mM NaCl, 200mM Arginine (pH 8.0).
Storage	Valid for 12 months from date of receipt when stored at -80°C. Recommend to aliquot the protein into smaller quantities for optimal storage. Please minimize freeze-thaw cycles.

Background

Siglec-10 is a ligand for CD52, the target of the therapeutic monoclonal antibody Alemtuzumab. It is also reported to bind to Vascular adhesion protein 1 (VAP-1) and to the co-stimulatory molecule CD24 also known as HSA (Heat-stable antigen). Siglecs (sialic acid binding Ig-like lectins) are I-type lectins that belong to the immunoglobulin superfamily. They are characterized by an N-terminal Ig-like V-type domain which mediates sialic acid binding, followed by a varying number of Ig-like C2-type domains. Siglecs 5-11 constitute the CD33/Siglec-3 related group, and are differentially expressed in the hematopoietic system.

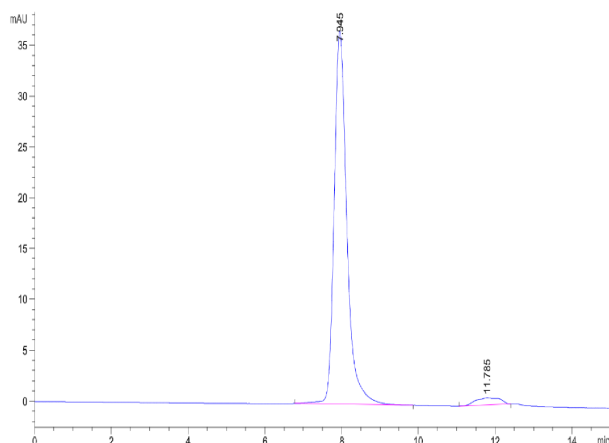
Assay Data

Bis-Tris PAGE



Human Siglec-10 (R119A) on Bis-Tris PAGE under reduced condition. The purity is greater than 95%.

SEC-HPLC



The purity of Human Siglec-10 (R119A) is greater than 95% as determined by SEC-HPLC.

Human Siglec-10 (R119A) Protein

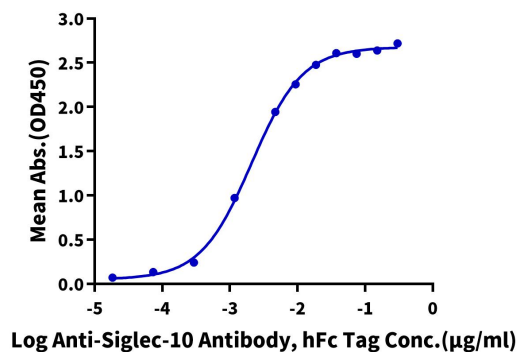
Cat. No. SIG-HM411

Assay Data

ELISA Data

Human Siglec-10 (R119A), His Tag ELISA

0.1µg Human Siglec-10 (R119A), His Tag Per Well



Immobilized Human Siglec-10 (R119A), His Tag at 1µg/ml (100µl/well) on the plate. Dose response curve for Anti-Siglec-10 Antibody, hFc Tag with the EC50 of 2.1ng/ml determined by ELISA (QC Test).