

Human Siglec-10 (R119A) Protein

Cat. No. SIG-HM411

Description

Source	Recombinant Human Siglec-10(R119A) Protein is expressed from HEK293 with His tag and Avi tag at the C-Terminus. It contains Met17-Thr546.
Accession	Q96LC7-1
Molecular Weight	The protein has a predicted MW of 62.64 kDa. Due to glycosylation, the protein migrates to 65-80 kDa based on Tris-Bis PAGE result.
Endotoxin	Less than 1EU per ug by the LAL method.
Purity	> 95% as determined by Tris-Bis PAGE

Formulation and Storage

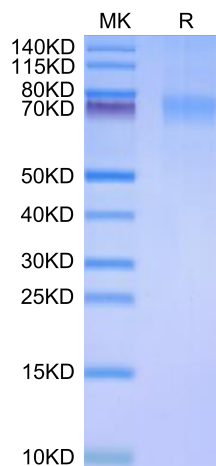
Formulation	Lyophilized from 0.22µm filtered solution in 20mM Tris,150mM NaCl, 200mM Arginine (pH 8.0). Normally 8% trehalose is added as protectant before lyophilization.
Reconstitution	Centrifuge the tube before opening. Reconstituting to a concentration more than 100 µg/ml is recommended. Dissolve the lyophilized protein in distilled water.
Storage	-20 to -80°C for 12 months as supplied from date of receipt.-20 to -80°C for 3-6 months in unopened state after reconstitution.2-8°C for 2-7 days after reconstitution.Recommend to aliquot the protein into smaller quantities for optimal storage. Please minimize freeze-thaw cycles.

Background

Siglec-10 is a ligand for CD52, the target of the therapeutic monoclonal antibody Alemtuzumab. It is also reported to bind to Vascular adhesion protein 1 (VAP-1) and to the co-stimulatory molecule CD24 also known as HSA (Heat-stable antigen).Siglecs (sialic acid binding Ig-like lectins) are I-type lectins that belong to the immunoglobulin superfamily. They are characterized by an N-terminal Ig-like V-type domain which mediates sialic acid binding, followed by a varying number of Ig-like C2-type domains. Siglecs 5-11 constitute the CD33/Siglec-3 related group, and are differentially expressed in the hematopoietic system.

Assay Data

Tris-Bis PAGE



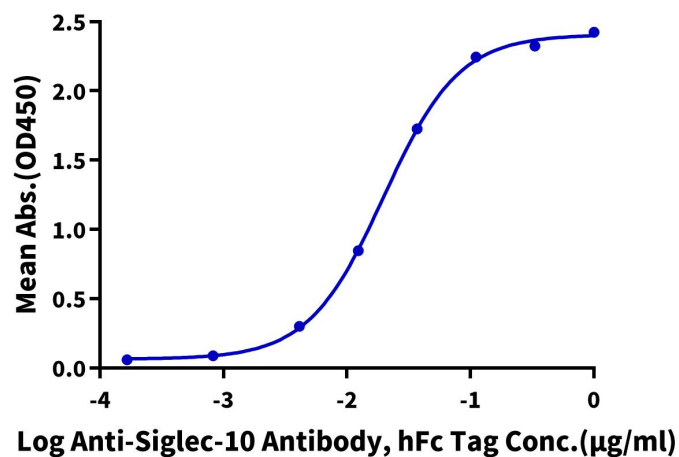
Human Siglec-10 (R119A) on Tris-Bis PAGE under reduced condition. The purity is greater than 95%.

ELISA Data

Assay Data

Human Siglec-10(R119A), His Tag ELISA

0.05µg Human Siglec-10(R119A), His Tag Per Well



Immobilized Human Siglec-10 (R119A) , His Tag at 0.5µg/ml (100µl/well) on the plate. Dose response curve for Anti-Siglec-10 (R119A) Antibody, hFc Tag with the EC50 of 19.8ng/ml determined by ELISA.