

Biotinylated Human Siglec-10 (R119A) Protein



Cat. No. SIG-HM411B

Description	
Source	Recombinant Biotinylated Human Siglec-10(R119A) Protein is expressed from HEK293 with His tag and Avi tag at the C-Terminus. It contains Met17-Thr546.
Accession	Q96LC7-1
Molecular Weight	The protein has a predicted MW of 62.64 kDa. Due to glycosylation, the protein migrates to 68-80 kDa based on Bis-Tris PAGE result.
Endotoxin	Less than 1 EU per ug by the LAL method.
Purity	> 95% as determined by Bis-Tris PAGE > 95% as determined by HPLC

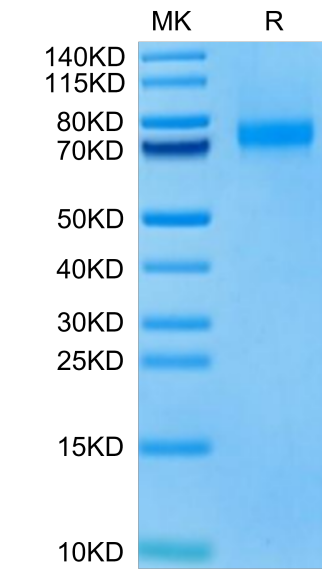
Formulation and Storage	
Formulation	Lyophilized from 0.22µm filtered solution in 20mM Tris 150mM NaCl, 200mM L-arginine (pH 8.0). Normally 8% trehalose is added as protectant before lyophilization.
Reconstitution	Dissolve the lyophilized protein in distilled water. Please refer to the Certificate of Analysis for detailed instructions.
Storage	-20 to -80°C for 12 months as supplied from date of receipt.-80°C for 3 months after reconstitution.Recommend to aliquot the protein into smaller quantities for optimal storage. Please minimize freeze-thaw cycles.

**Background**

Siglec-10 is a ligand for CD52, the target of the therapeutic monoclonal antibody Alemtuzumab. It is also reported to bind to Vascular adhesion protein 1 (VAP-1) and to the co-stimulatory molecule CD24 also known as HSA (Heat-stable antigen).Siglecs (sialic acid binding Ig-like lectins) are I-type lectins that belong to the immunoglobulin superfamily. They are characterized by an N-terminal Ig-like V-type domain which mediates sialic acid binding, followed by a varying number of Ig-like C2-type domains. Siglecs 5-11 constitute the CD33/Siglec-3 related group, and are differentially expressed in the hematopoietic system.

Assay Data

Bis-Tris PAGE



Biotinylated Human Siglec-10 (R119A) on Bis-Tris PAGE under reduced condition. The purity is greater than 95%.

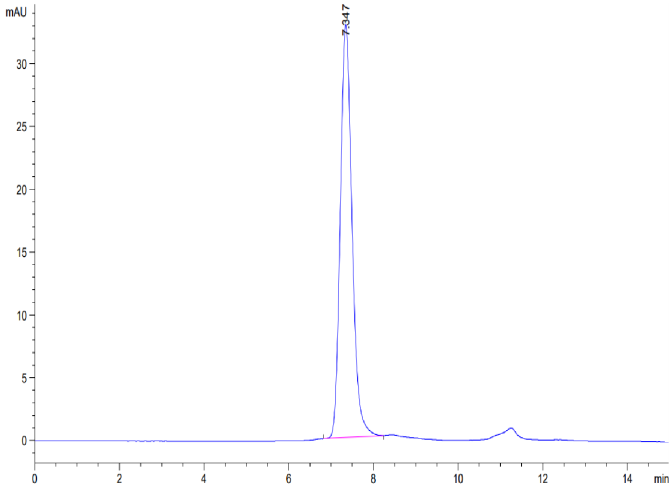
SEC-HPLC

Biotinylated Human Siglec-10 (R119A) Protein

Cat. No. SIG-HM411B



Assay Data

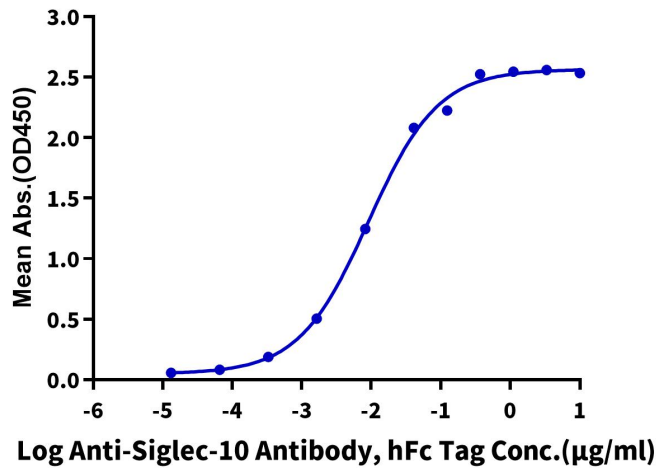


The purity of Biotinylated Human Siglec-10 (R119A) is greater than 95% as determined by SEC-HPLC.

ELISA Data

Biotinylated Human Siglec-10 (R119A), His Tag ELISA

0.2µg Biotinylated Human Siglec-10 (R119A), His Tag Per Well



Immobilized Biotinylated Human Siglec-10 (R119A) , His Tag at 2µg/ml (100µl/Well) on the streptavidin (5µg/ml) precoated plate. Dose response curve for Anti-Siglec-10 Antibody, hFc Tag with the EC50 of 9.1ng/ml determined by ELISA.