

Human Siglec-9 Protein



Cat. No. SIG-HM419

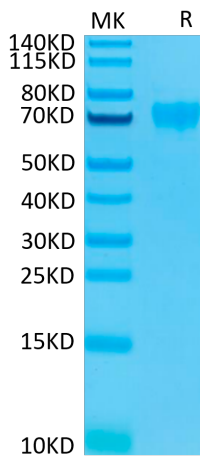
Description	
Source	Recombinant human Siglec-9 Protein is expressed from HEK293 with His tag and Avi tag at the C-Terminus. It contains Gln18-Gly348.
Accession	Q9Y336-1
Molecular Weight	The protein has a predicted MW of 38.9 kDa. Due to glycosylation, the protein migrates to 70-80 kDa based on Bis-Tris PAGE result.
Endotoxin	Less than 1EU per µg by the LAL method.
Purity	> 95% as determined by Bis-Tris PAGE > 90% as determined by HPLC

Formulation and Storage	
Formulation	Supplied as 0.22µm filtered solution in 25mM MES, 150mM NaCl (pH 5.5).
Storage	Valid for 12 months from date of receipt when stored at -80°C. Recommend to aliquot the protein into smaller quantities for optimal storage. Please minimize freeze-thaw cycles.

Background	
Siglec-9 is a sialic-acid-binding lectin expressed predominantly on myeloid cells. Aberrant glycosylation occurs in essentially all types of cancers and results in increased sialylation. Thus, when the mucin MUC1 is expressed on cancer cells, it is decorated by multiple short, sialylated O-linked glycans (MUC1-ST).	

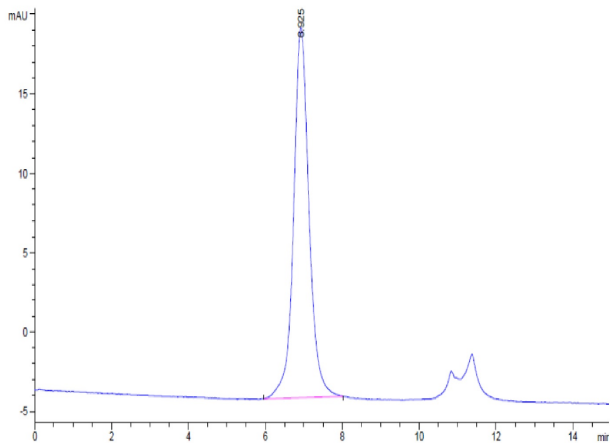
Assay Data

Bis-Tris PAGE



Human Siglec-9 on Bis-Tris PAGE under reduced condition. The purity is greater than 95%.

SEC-HPLC



The purity of Human Siglec-9 is greater than 90% as determined by SEC-HPLC.