

Non-biotinylated Human Siglec-10 Protein

Cat. No. SIG-HM510



Description

Source	Recombinant Human Siglec-10 Protein is expressed from HEK293 with hFc (IgG1) tag and Avi tag at the C-Terminus. It contains Met17-Thr546.
Accession	Q96LC7-1
Molecular Weight	The protein has a predicted MW of 85.8 kDa. Due to glycosylation, the protein migrates to 100-130 kDa based on Bis-Tris PAGE result.
Endotoxin	Less than 0.1 EU per µg by the LAL method.
Purity	> 95% as determined by Bis-Tris PAGE > 85% as determined by HPLC

Formulation and Storage

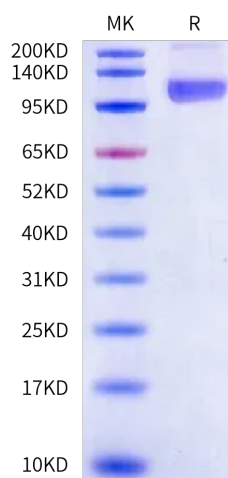
Formulation	Supplied as 0.22µm filtered solution in PBS, 0.5M Arginine (pH 7.4).
Storage	Valid for 12 months from date of receipt when stored at -80°C. Recommend to aliquot the protein into smaller quantities for optimal storage. Please minimize freeze-thaw cycles.

Background

Siglec-10 is a ligand for CD52, the target of the therapeutic monoclonal antibody Alemtuzumab. It is also reported to bind to Vascular adhesion protein 1 (VAP-1) and to the co-stimulatory molecule CD24 also known as HSA (Heat-stable antigen). Siglecs (sialic acid binding Ig-like lectins) are I-type lectins that belong to the immunoglobulin superfamily. They are characterized by an N-terminal Ig-like V-type domain which mediates sialic acid binding, followed by a varying number of Ig-like C2-type domains. Siglecs 5-11 constitute the CD33/Siglec-3 related group, and are differentially expressed in the hematopoietic system.

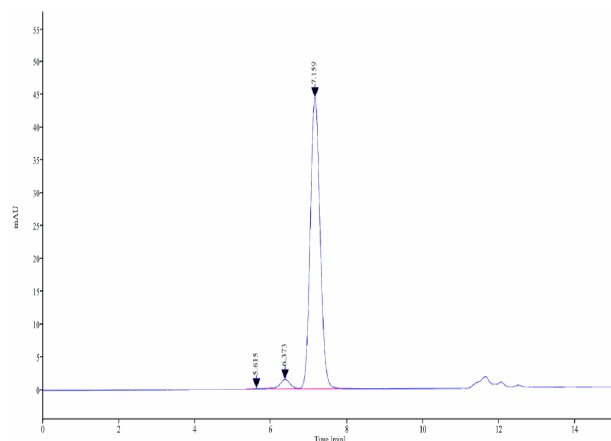
Assay Data

Bis-Tris PAGE



Human Siglec-10 on Bis-Tris PAGE under reduced conditions. The purity is greater than 95%

SEC-HPLC



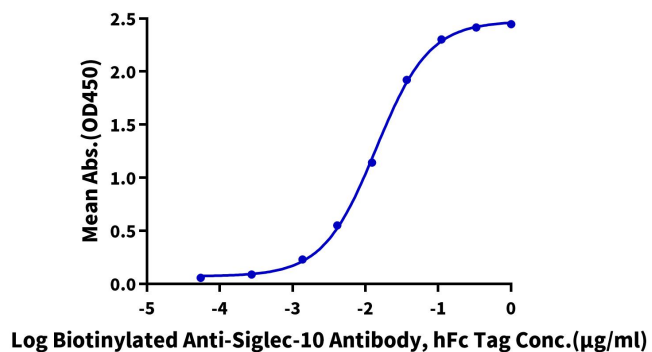
The purity of Human Siglec-10 is greater than 85% as determined by SEC-HPLC.

Assay Data

ELISA Data

Human Siglec-10, hFc Tag ELISA

0.2µg Human Siglec-10, hFc Tag Per Well



Immobilized Human Siglec-10, hFc Tag at 2µg/ml (100µl/Well) on the plate. Dose response curve for Biotinylated Anti-Siglec-10 Antibody, hFc Tag with the EC50 of 14.0ng/ml determined by ELISA.