

Biotinylated Human Siglec-10 Protein

Cat. No. SIG-HM510B

Description

Source	Recombinant Biotinylated Human Siglec-10 Protein is expressed from HEK293 with hFc tag and Avi tag at the C-Terminus. It contains Met17-Thr546.
Accession	Q96LC7-1
Molecular Weight	The protein has a predicted MW of 85.8 kDa. Due to glycosylation, the protein migrates to 95-110 kDa based on Bis-Tris PAGE result.
Endotoxin	Less than 1EU per μg by the LAL method.
Purity	> 95% as determined by Bis-Tris PAGE

Formulation and Storage

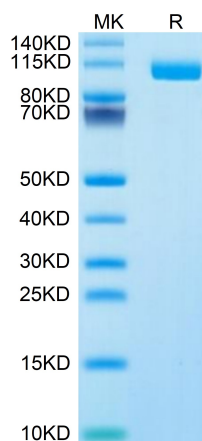
Formulation	Lyophilized from 0.22 μm filtered solution in PBS, 500mM L-arginine (pH 7.4). Normally 8% trehalose is added as protectant before lyophilization.
Reconstitution	Centrifuge the tube before opening. Reconstituting to a concentration more than 100 $\mu\text{g}/\text{ml}$ is recommended. Dissolve the lyophilized protein in distilled water.
Storage	-20 to -80°C for 12 months as supplied from date of receipt. -80°C for 3 months after reconstitution. Recommend to aliquot the protein into smaller quantities for optimal storage. Please minimize freeze-thaw cycles.

Background

Siglec-10 is a ligand for CD52, the target of the therapeutic monoclonal antibody Alemtuzumab. It is also reported to bind to Vascular adhesion protein 1 (VAP-1) and to the co-stimulatory molecule CD24 also known as HSA (Heat-stable antigen). Siglecs (sialic acid binding Ig-like lectins) are I-type lectins that belong to the immunoglobulin superfamily. They are characterized by an N-terminal Ig-like V-type domain which mediates sialic acid binding, followed by a varying number of Ig-like C2-type domains. Siglecs 5-11 constitute the CD33/Siglec-3 related group, and are differentially expressed in the hematopoietic system.

Assay Data

Bis-Tris PAGE

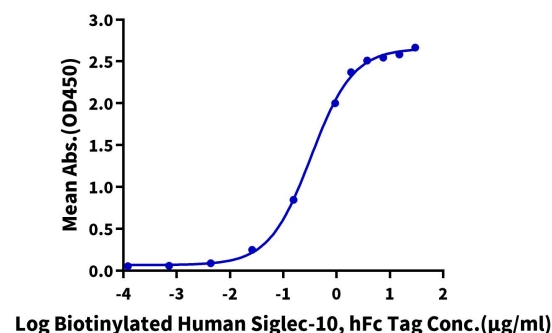


Biotinylated Human Siglec-10 on Bis-Tris PAGE under reduced condition. The purity is greater than 95%.

ELISA Data

Biotinylated Human Siglec-10, hFc Tag ELISA

0.5 μg Anti-Siglec-10 Antibody, hFc Tag Per Well



Immobilized Anti-Siglec-10 Antibody, hFc Tag at 5 $\mu\text{g}/\text{ml}$ (100 $\mu\text{l}/\text{well}$) on the plate. Dose response curve for Biotinylated Human Siglec-10, hFc Tag with the EC50 of 0.33 $\mu\text{g}/\text{ml}$ determined by ELISA.