

Mouse Siglec-15/CD33L3 Protein

Cat. No. SIG-MM115

Description

Source	Recombinant Mouse Siglec-15/CD33L3 Protein is expressed from Expi293 with His and Avi tag at the C-terminal. It contains Arg24-Thr262.
Accession	A7E1W8-1
Molecular Weight	The protein has a predicted MW of 26.7 kDa. Due to glycosylation, the protein migrates to 30-40 kDa based on Tris-Bis PAGE result.
Endotoxin	Less than 1EU per µg by the LAL method.
Purity	> 95% as determined by Tris-Bis PAGE

Formulation and Storage

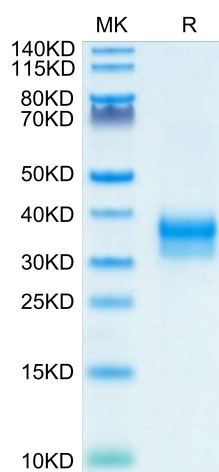
Formulation	Lyophilized from 0.22µm filtered solution in 20mM PB, 0.5M NaCl, 0.1M L-Arginine (pH 7.4). Normally 5% trehalose is added as protectant before lyophilization.
Reconstitution	Centrifuge tubes before opening. Reconstituting to a concentration more than 100 µg/ml is recommended (usually we use 1mg/ml solution for lyophilization). Dissolve the lyophilized protein in distilled water.
Storage	-20 to -80°C for 12 months as supplied from date of receipt. -20 to -80°C for 3-6 months in unopened state after reconstitution. 2-8°C for 2-7 days after reconstitution. Recommend to aliquot the protein into smaller quantities for optimal storage. Please avoid freeze-thaw cycles.

Background

Siglec-15 is a transmembrane glycoprotein in the Siglec family of sialic acid-binding immune regulatory molecules. Mature human Siglec-15 consists of a 244 amino acid extracellular domain (ECD) with two Ig-like domains, a 21 aa transmembrane segment, and a 44 aa cytoplasmic domain. Siglec-15 is a potential therapeutic target for osteoporosis and plays a conserved regulatory role in the immune system of vertebrates.

Assay Data

Tris-Bis PAGE



Mouse Siglec-15 on Tris-Bis PAGE under reduced condition. The purity is greater than 95%.