

# Biotinylated Mouse Siglec-15/CD33L3 Protein (Primary Amine Labeling)

Cat. No. SIG-MM115B

## Description

<b>Source</b>	Recombinant Biotinylated Mouse Siglec-15/CD33L3 Protein (Primary Amine Labeling) is expressed from HEK293 with His tag at the C-Terminus. It contains Arg24-Thr262.
<b>Accession</b>	A7E1W8-1
<b>Molecular Weight</b>	The protein has a predicted MW of 26.7 kDa. Due to glycosylation, the protein migrates to 35-43 kDa based on Bis-Tris PAGE result.
<b>Endotoxin</b>	Less than 1EU per $\mu\text{g}$ by the LAL method.
<b>Purity</b>	> 95% as determined by Bis-Tris PAGE

## Formulation and Storage

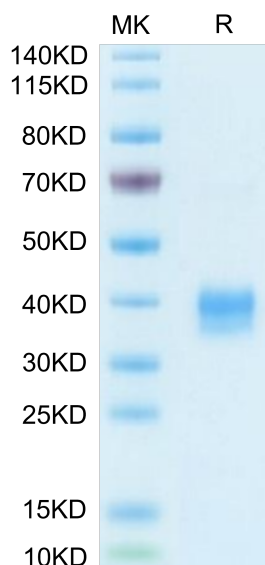
<b>Formulation</b>	Supplied as 0.22 $\mu\text{m}$ filtered solution in 20mM PB, 0.5M NaCl, 0.1M L-arginine (pH 7.4).
<b>Storage</b>	Valid for 12 months from date of receipt when stored at -80°C. Recommend to aliquot the protein into smaller quantities for optimal storage. Please minimize freeze-thaw cycles.

## Background

Siglec-15 is a transmembrane glycoprotein in the Siglec family of sialic acid-binding immune regulatory molecules. Mature human Siglec-15 consists of a 244 amino acid extracellular domain (ECD) with two Ig-like domains, a 21 aa transmembrane segment, and a 44 aa cytoplasmic domain. Siglec-15 is a potential therapeutic target for osteoporosis and plays a conserved regulatory role in the immune system of vertebrates.

## Assay Data

### Bis-Tris PAGE



Biotinylated Mouse Siglec-15/CD33L3 on Bis-Tris PAGE under reduced condition. The purity is greater than 95%.