

Human SLAMF6/NTB-A Protein

Cat. No. SLA-HM2F6

Description

Source	Recombinant Human SLAMF6/NTB-A Protein is expressed from HEK293 with hFc tag at the C-Terminus. It contains Gln22-Met226.
Accession	Q96DU3-1
Molecular Weight	The protein has a predicted MW of 49.8 kDa. Due to glycosylation, the protein migrates to 60-75 kDa based on Bis-Tris PAGE result.
Endotoxin	Less than 1EU per μg by the LAL method.
Purity	> 95% as determined by Bis-Tris PAGE > 95% as determined by HPLC

Formulation and Storage

Formulation	Supplied as 0.22 μm filtered solution in PBS (pH 7.4).
Storage	Valid for 12 months from date of receipt when stored at -80°C . Recommend to aliquot the protein into smaller quantities for optimal storage. Please minimize freeze-thaw cycles.

Background

SLAMF6 (signaling lymphocyte activation molecule 6) (Ly108 in mice, NTB-A or SF2000 in humans) is a homophilic receptor belonging to the superfamily immunoglobulin (Ig) domain-containing molecules. It is known to be widely and exclusively expressed on hematopoietic cells. The SLAMF6 intracellular portion is characterized by two ITSMs that act as binding sites for adaptor molecules such as SAP and EAT-2.

Assay Data

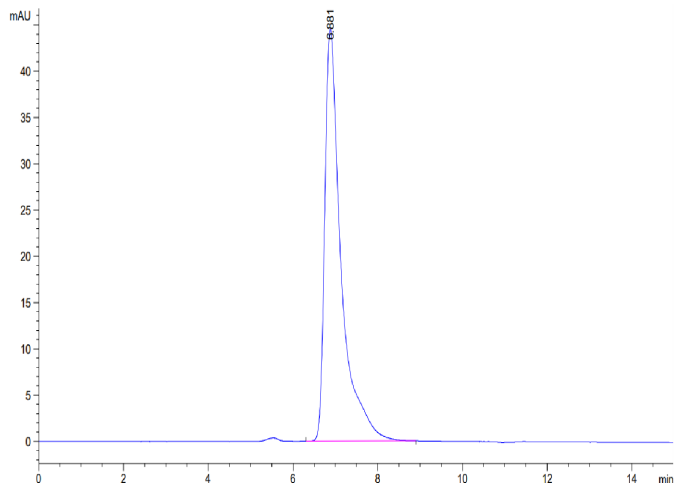
Bis-Tris PAGE



Human SLAMF6 on Bis-Tris PAGE under reduced condition. The purity is greater than 95%.

SEC-HPLC

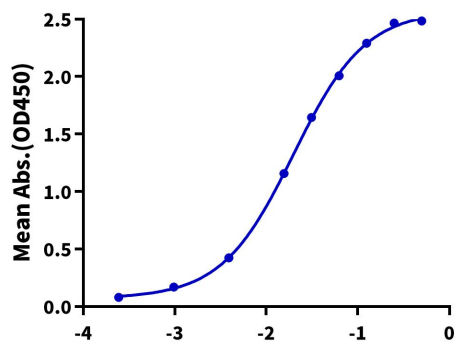
Assay Data



The purity of Human SLAMF6 is greater than 95% as determined by SEC-HPLC.

ELISA Data

Human SLAMF6, hFc Tag ELISA
0.1 μ g Human SLAMF6, hFc Tag Per Well



Immobilized Human SLAMF6, hFc Tag at 1 μ g/ml (100 μ l/well) on the plate. Dose response curve for Biotinylated Anti-SLAMF6 Antibody, hFc Tag with the EC50 of 19.8ng/ml determined by ELISA.