

# Human CD48/SLAMF2 Protein

Cat. No. SLA-HM2MF

## Description

<b>Source</b>	Recombinant Human CD48/SLAMF2 Protein is expressed from Expi293 with hFc tag at the C-terminal. It contains Gln27-Ser220.
<b>Accession</b>	P09326-1
<b>Molecular Weight</b>	The protein has a predicted MW of 48.9 kDa. Due to glycosylation, the protein migrates to 60-70 kDa based on Tris-Bis PAGE result.
<b>Endotoxin</b>	Less than 1EU per µg by the LAL method.
<b>Purity</b>	> 95% as determined by Tris-Bis PAGE > 95% as determined by HPLC

## Formulation and Storage

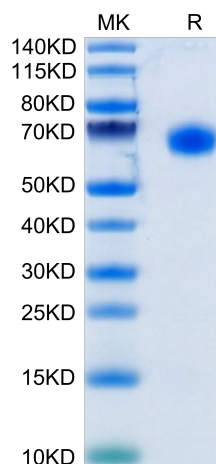
<b>Formulation</b>	Lyophilized from 0.22µm filtered solution in PBS (pH 7.4). Normally 5% trehalose is added as protectant before lyophilization.
<b>Reconstitution</b>	Centrifuge tubes before opening. Reconstituting to a concentration more than 100 µg/ml is recommended (usually we use 1mg/ml solution for lyophilization). Dissolve the lyophilized protein in distilled water.
<b>Storage</b>	-20 to -80°C for 12 months as supplied from date of receipt. -20 to -80°C for 3-6 months in unopened state after reconstitution. 2-8°C for 2-7 days after reconstitution. Recommend to aliquot the protein into smaller quantities for optimal storage. Please avoid freeze-thaw cycles.

## Background

CD48, also known as BLAST-1, BCM-1, and SLAMF2, is a 65 kDa GPI-linked protein in the CD2 family of immunoglobulin superfamily molecules. CD2 and 2B4 (CD244) are known ligands for CD48. CD48 protein is expressed on most lineage-committed hematopoietic cells but not on hematopoietic stem cells or multipotent hematopoietic progenitors.

## Assay Data

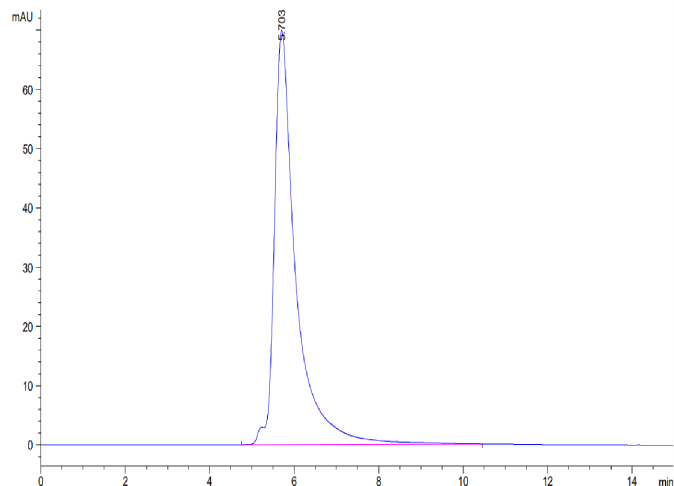
### Tris-Bis PAGE



Human CD48 on Tris-Bis PAGE under reduced condition. The purity is greater than 95%.

### SEC-HPLC

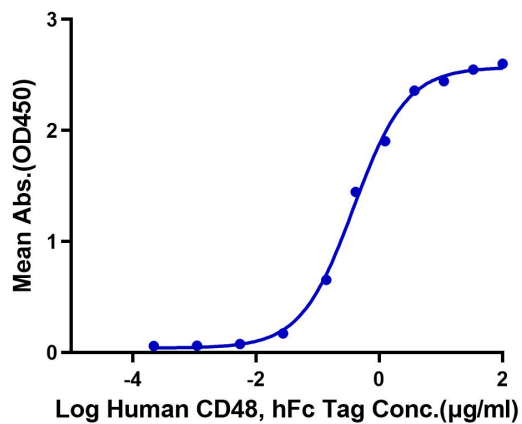
Assay Data



The purity of Human CD48 is greater than 95% as determined by SEC-HPLC.

ELISA Data

**Human CD48, hFc Tag ELISA**  
0.1µg Human 2B4, His Tag Per Well



Immobilized Human 2B4, His Tag at 1µg/ml (100µl/well) on the plate. Dose response curve for Human CD48, hFc Tag with the EC50 of 0.38µg/ml determined by ELISA.