

# Biotinylated Human SLAMF6/NTB-A Protein

Cat. No. SLA-HM4F6B

## Description

<b>Source</b>	Recombinant Biotinylated Human SLAMF6/NTB-A Protein is expressed from HEK293 with His tag and Avi tag at the C-Terminus. It contains Gln22-Met226.
<b>Accession</b>	Q96DU3-1
<b>Molecular Weight</b>	The protein has a predicted MW of 26 kDa. Due to glycosylation, the protein migrates to 38-50 kDa based on Tris-Bis PAGE result.
<b>Endotoxin</b>	Less than 1EU per µg by the LAL method.
<b>Purity</b>	> 95% as determined by Tris-Bis PAGE > 95% as determined by HPLC

## Formulation and Storage

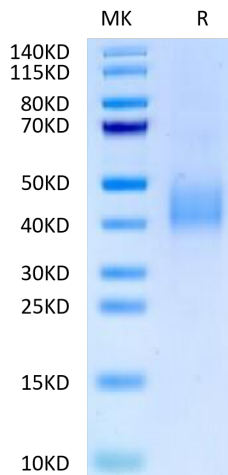
<b>Formulation</b>	Lyophilized from 0.22 µm filtered solution in PBS (pH 7.4). Normally 8% trehalose is added as protectant before lyophilization.
<b>Reconstitution</b>	Centrifuge the tube before opening. Reconstituting to a concentration more than 100 µg/ml is recommended. Dissolve the lyophilized protein in distilled water.
<b>Storage</b>	-20 to -80°C for 12 months as supplied from date of receipt. -20 to -80°C for 3-6 months in unopened state after reconstitution. 2-8°C for 2-7 days after reconstitution. Recommend to aliquot the protein into smaller quantities for optimal storage. Please minimize freeze-thaw cycles.

## Background

SLAMF6 (signaling lymphocyte activation molecule 6) (Ly108 in mice, NTB-A or SF2000 in humans) is a homophilic receptor belonging to the superfamily immunoglobulin (Ig) domain-containing molecules. It is known to be widely and exclusively expressed on hematopoietic cells. The SLAMF6 intracellular portion is characterized by two ITSMs that act as binding sites for adaptor molecules such as SAP and EAT-2.

## Assay Data

### Tris-Bis PAGE



Biotinylated Human SLAMF6 on Tris-Bis PAGE under reduced condition. The purity is greater than 95%.

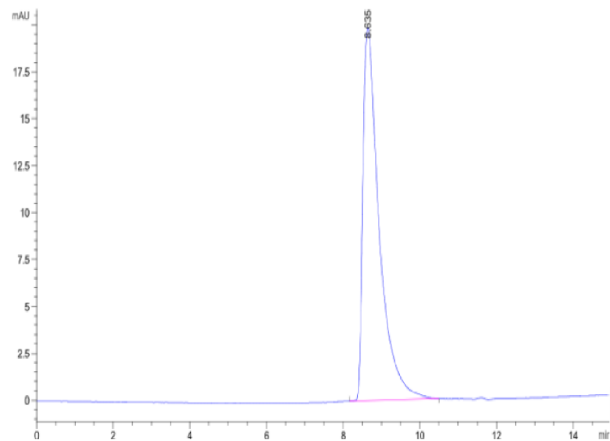
### SEC-HPLC

# Biotinylated Human SLAMF6/NTB-A Protein

Cat. No. SLA-HM4F6B



## Assay Data



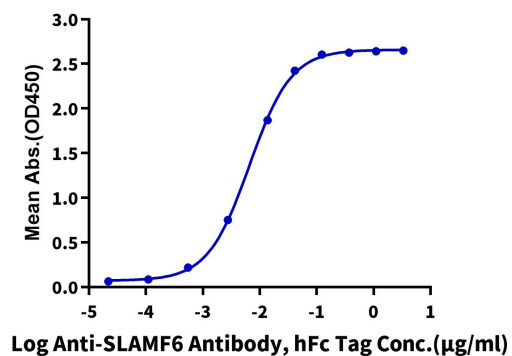
The purity of Biotinylated Human SLAMF6 is greater than 95% as determined by SEC-HPLC.

Assay Data

ELISA Data

**Biotinylated Human SLAMF6, His Tag ELISA**

0.05µg Biotinylated Human SLAMF6, His Tag Per Well



Immobilized Biotinylated Human SLAMF6, His Tag at 0.5µg/ml (100µl/Well) on streptavidin (5µg/ml) precoated plate. Dose response curve for Anti-SLAMF6 Antibody, hFc Tag with the EC50 of 6.6ng/ml determined by ELISA.