

Mouse SLAMF1/SLAM/CD150 Protein

Cat. No. SLA-MM1MF

Description

Source	Recombinant Mouse SLAMF1/SLAM/CD150 Protein is expressed from HEK293 with His tag at the C-Terminus. It contains Thr25-Pro242.
Accession	Q9QUM4-1
Molecular Weight	The protein has a predicted MW of 25.3 kDa. Due to glycosylation, the protein migrates to 48-55 kDa based on Bis-Tris PAGE result.
Endotoxin	Less than 1EU per μ g by the LAL method.
Purity	> 95% as determined by Bis-Tris PAGE > 95% as determined by HPLC

Formulation and Storage

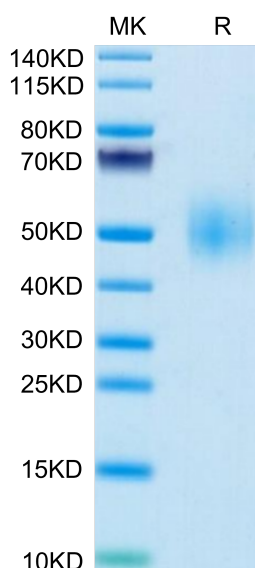
Formulation	Supplied as 0.22 μ m filtered solution in PBS (pH 7.4).
Storage	Valid for 12 months from date of receipt when stored at -80°C. Recommend to aliquot the protein into smaller quantities for optimal storage. Please minimize freeze-thaw cycles.

Background

The signaling lymphocytic activation molecule (SLAM) family is comprised of nine distinct receptors (SLAMF1 through SLAMF9) that are expressed on hematopoietic cells. The SLAM family receptor function is largely controlled via SLAM associated protein (SAP) family adaptors. The SAP family adaptors consist of SAP, Ewing sarcoma associated transcript (EAT)-2, and EAT-2-related transducer (ERT).

Assay Data

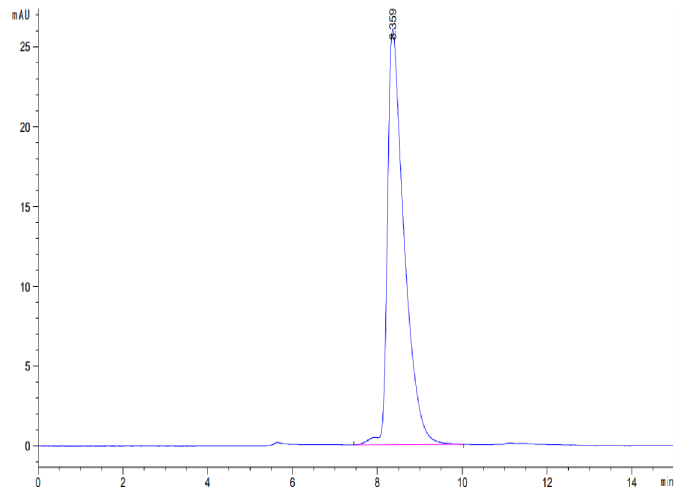
Bis-Tris PAGE



Mouse SLAMF1 on Bis-Tris PAGE under reduced condition. The purity is greater than 95%.

SEC-HPLC

Assay Data



The purity of Mouse SLAMF1 is greater than 95% as determined by SEC-HPLC.