

Human NaPi2b/SLC34A2 VLP

Cat. No. SLC-HM02V

Description

Source	Recombinant Human NaPi2b/SLC34A2 VLP is expressed from HEK293. It contains Met1-Leu689 (It may have cross reaction with anti-His antibody).
Accession	O95436-2
Molecular Weight	The protein has a predicted MW of 78.87 kDa.
Endotoxin	Less than 1 EU per µg by the LAL method.
Purity	> 95% as determined by HPLC

Formulation and Storage

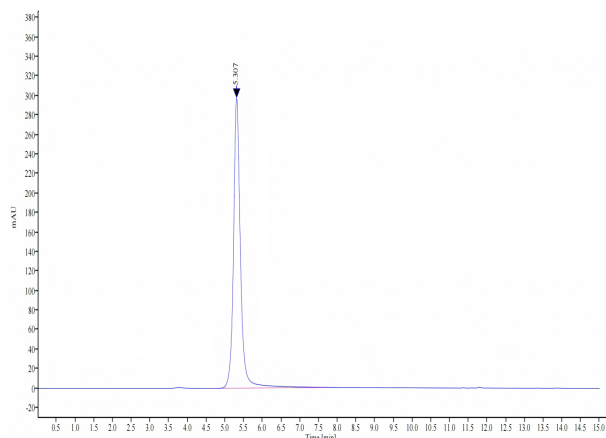
Formulation	Supplied as 0.22 µm filtered solution in PBS (pH 7.4). Notice: If you need it for immunization, water-soluble adjuvant is recommended.
Storage	Valid for 12 months from date of receipt when stored at -80°C. Recommend to aliquot the protein into smaller quantities for optimal storage. Please minimize freeze-thaw cycles.

Background

SLC34A2, a member of the SLC34 family, is a multipass membrane protein and encodes a type 2b sodium-dependent phosphate transporter, NaPiIb. It is known that SLC34A2 can mediate transporting inorganic phosphate into epithelial cells via sodium ion cotransport. SLC34A2 also strongly inhibited tumor growth and metastasis ability in an A549 subcutaneous tumor model and lung metastasis mode.

Assay Data

SEC-HPLC

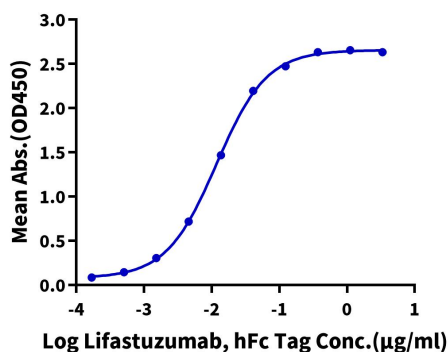


The purity of Human NaPi2b VLP is greater than 95% as determined by SEC-HPLC.

ELISA Data

Human NaPi2b VLP ELISA

0.5µg Human NaPi2b VLP Per Well



Immobilized Human NaPi2b VLP at 5µg/ml (100µl/well) on the plate. Dose response curve for Lifastuzumab, hFc Tag with the EC50 of 11.8ng/ml determined by ELISA.