

# Human SLPI Protein

Cat. No. SLP-HM201



## Description

<b>Source</b>	Recombinant Human SLPI Protein is expressed from HEK293 with hFc tag at the C-Terminus. It contains Ser26-Ala132.
<b>Accession</b>	P03973
<b>Molecular Weight</b>	The protein has a predicted MW of 38.5 kDa. Due to glycosylation, the protein migrates to 40-50 kDa based on Tris-Bis PAGE result.
<b>Endotoxin</b>	Less than 1EU per µg by the LAL method.
<b>Purity</b>	> 95% as determined by Tris-Bis PAGE > 95% as determined by HPLC

## Formulation and Storage

<b>Formulation</b>	Supplied as 0.22µm filtered solution in PBS, 350mM NaCl (pH 7.4).
<b>Storage</b>	Valid for 12 months from date of receipt when stored at -80°C. Recommend to aliquot the protein into smaller quantities for optimal storage. Please minimize freeze-thaw cycles.

## Background

Elafin and SLPI (secretory leucocyte protease inhibitor) have multiple important roles both in normal homeostasis and at sites of inflammation. These include antiprotease and antimicrobial activity as well as modulation of the response to LPS (lipopolysaccharide) stimulation. Elafin and SLPI are members of larger families of proteins secreted predominantly at mucosal sites, and have been shown to be modulated in multiple pathological conditions.

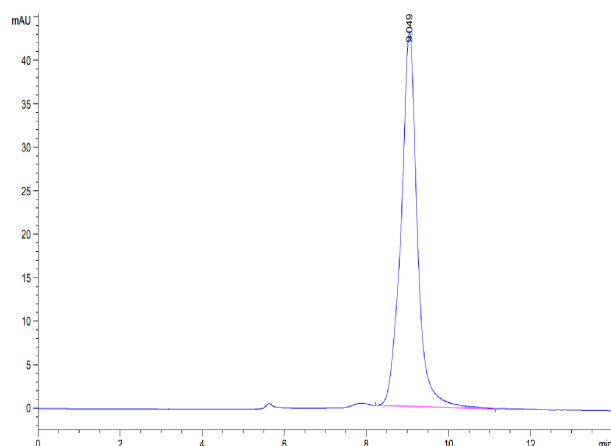
## Assay Data

### Tris-Bis PAGE



Human SLPI on Tris-Bis PAGE under reduced condition. The purity is greater than 95%.

### SEC-HPLC



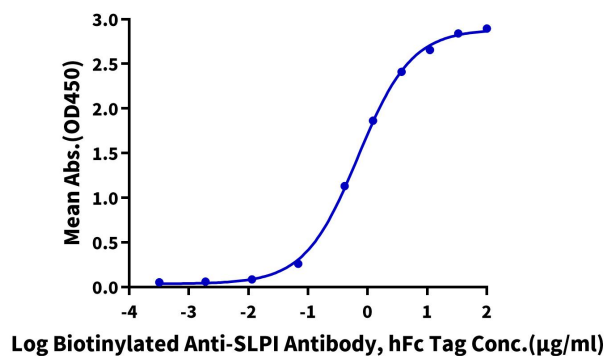
The purity of Human SLPI is greater than 95% as determined by SEC-HPLC.

Assay Data

ELISA Data

**Human SLPI, hFc Tag ELISA**

0.2µg Human SLPI, hFc Tag Per Well



Immobilized Human SLPI, hFc Tag at 2µg/ml (100µl/Well) on the plate. Dose response curve for Biotinylated Anti-SLPI Antibody, hFc Tag with the EC50 of 0.69µg/ml determined by ELISA.