

Human SLPI Protein

Cat. No. SLP-HM201

Description

Source	Recombinant Human SLPI Protein is expressed from HEK293 with hFc tag at the C-Terminus. It contains Ser26-Ala132.
Accession	P03973
Molecular Weight	The protein has a predicted MW of 38.5 kDa. Due to glycosylation, the protein migrates to 40-50 kDa based on Bis-Tris PAGE result.
Endotoxin	Less than 1EU per µg by the LAL method.
Purity	> 95% as determined by Bis-Tris PAGE > 95% as determined by HPLC

Formulation and Storage

Formulation	Lyophilized from 0.22 µm filtered solution in PBS, 350mM NaCl (pH 7.4). Normally 8% mannitol is added as protectant before lyophilization.
Reconstitution	Centrifuge the tube before opening. Reconstituting to a concentration more than 100 µg/ml is recommended. Dissolve the lyophilized protein in distilled water.
Storage	-20 to -80°C for 12 months as supplied from date of receipt. -80°C for 3 months after reconstitution. Recommend to aliquot the protein into smaller quantities for optimal storage. Please minimize freeze-thaw cycles.

Background

Elafin and SLPI (secretory leucocyte protease inhibitor) have multiple important roles both in normal homeostasis and at sites of inflammation. These include antiprotease and antimicrobial activity as well as modulation of the response to LPS (lipopolysaccharide) stimulation. Elafin and SLPI are members of larger families of proteins secreted predominantly at mucosal sites, and have been shown to be modulated in multiple pathological conditions.

Assay Data

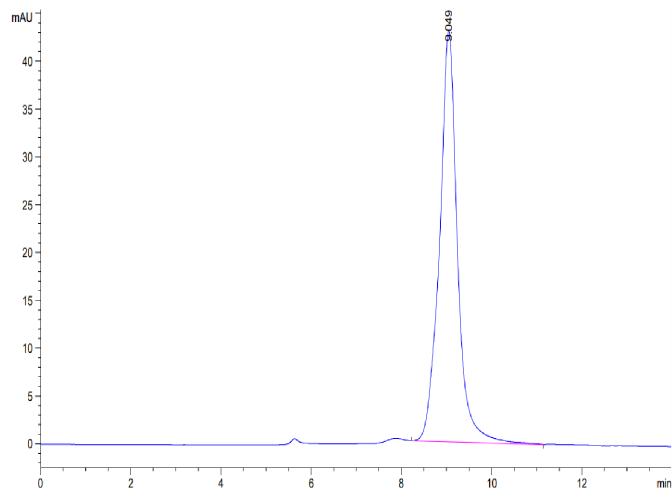
Bis-Tris PAGE



Human SLPI on Bis-Tris PAGE under reduced condition. The purity is greater than 95%.

SEC-HPLC

Assay Data

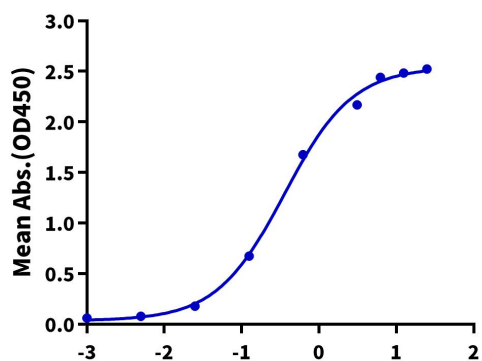


The purity of Human SLPI is greater than 95% as determined by SEC-HPLC.

ELISA Data

Human SLPI, hFc Tag ELISA

0.5µg Human SLPI, hFc Tag Per Well



Immobilized Human SLPI, hFc Tag at 5µg/ml (100µl/Well) on the plate. Dose response curve for Biotinylated Anti-SLPI Antibody, hFc Tag with the EC50 of 0.36µg/ml determined by ELISA (QC Test).