

Mouse SLPI Protein

Cat. No. SLP-MM201

Description

Source	Recombinant Mouse SLPI Protein is expressed from HEK293 with hFc tag at the C-Terminus. It contains Ser26-Met131.
Accession	P97430
Molecular Weight	The protein has a predicted MW of 38.5 kDa. Due to glycosylation, the protein migrates to 40-50 kDa based on Bis-Tris PAGE result.
Endotoxin	Less than 1EU per µg by the LAL method.
Purity	> 95% as determined by Bis-Tris PAGE > 95% as determined by HPLC

Formulation and Storage

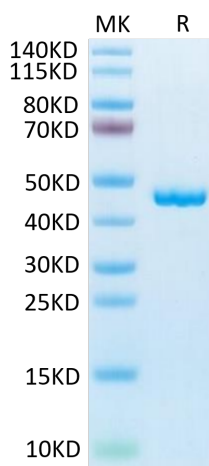
Formulation	Supplied as 0.22µm filtered solution in PBS, 350mM NaCl (pH 7.4).
Storage	Valid for 12 months from date of receipt when stored at -80°C. Recommend to aliquot the protein into smaller quantities for optimal storage. Please minimize freeze-thaw cycles.

Background

Elafin and SLPI (secretory leucocyte protease inhibitor) have multiple important roles both in normal homeostasis and at sites of inflammation. These include antiprotease and antimicrobial activity as well as modulation of the response to LPS (lipopolysaccharide) stimulation. Elafin and SLPI are members of larger families of proteins secreted predominantly at mucosal sites, and have been shown to be modulated in multiple pathological conditions.

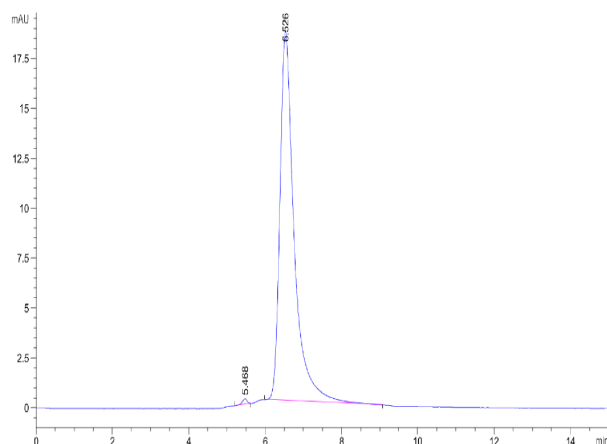
Assay Data

Bis-Tris PAGE



Mouse SLPI on Bis-Tris PAGE under reduced condition. The purity is greater than 95%.

SEC-HPLC



The purity of Mouse SLPI is greater than 95% as determined by SEC-HPLC.