

Human SERPINF2/A2AP Protein

Cat. No. SPF-HM101

Description

Source	Recombinant Human SERPINF2/A2AP Protein is expressed from HEK293 with His tag at the C-Terminus. It contains Met28-Lys491.
Accession	P08697-1
Molecular Weight	The protein has a predicted MW of 52.9 kDa. Due to glycosylation, the protein migrates to 60-70 kDa based on Tris-Bis PAGE result.
Endotoxin	Less than 1EU per µg by the LAL method.
Purity	> 95% as determined by Tris-Bis PAGE > 90% as determined by HPLC

Formulation and Storage

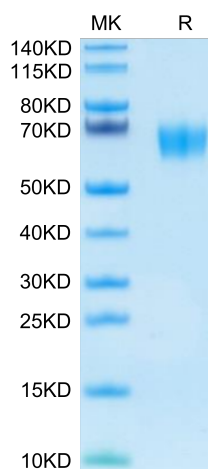
Formulation	Lyophilized from 0.22µm filtered solution in PBS (pH 7.4). Normally 8% trehalose is added as protectant before lyophilization.
Reconstitution	Centrifuge the tube before opening. Reconstituting to a concentration more than 100 µg/ml is recommended. Dissolve the lyophilized protein in distilled water.
Storage	-20 to -80°C for 12 months as supplied from date of receipt. -20 to -80°C for 3-6 months in unopened state after reconstitution. 2-8°C for 2-7 days after reconstitution. Recommend to aliquot the protein into smaller quantities for optimal storage. Please minimize freeze-thaw cycles.

Background

Large-pool solvent/detergent (SD) plasma for transfusion exhibits reduced alpha 2-antiplasmin (alpha2-AP; SERPINF2) functional activity. The reason for the loss of alpha2-AP has not been described and could be due to the SD incubation itself and/or to the processing steps implemented to remove the solvent and the detergent.

Assay Data

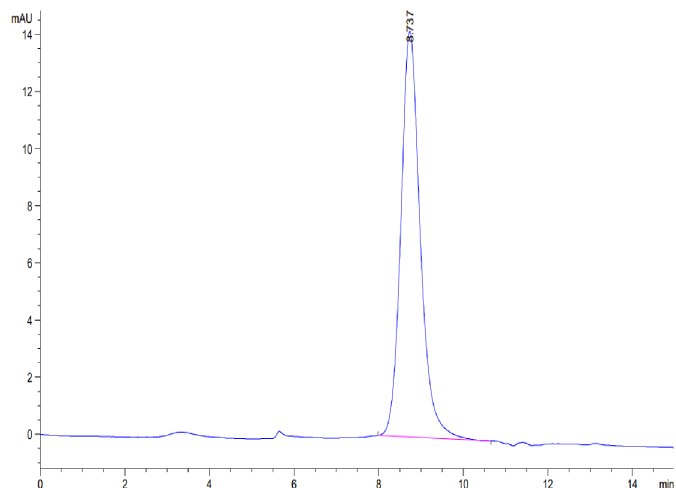
Tris-Bis PAGE



Human SERPINF2 on Tris-Bis PAGE under reduced condition. The purity is greater than 95%.

SEC-HPLC

Assay Data

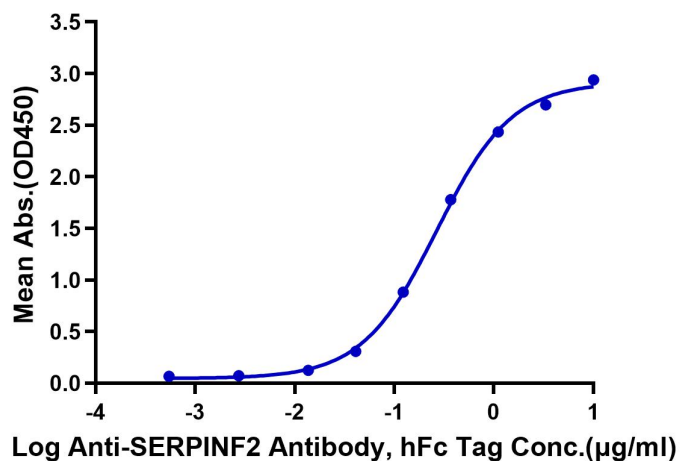


The purity of Human SERPINF2 is greater than 90% as determined by SEC-HPLC.

ELISA Data

Human SERPINF2, His Tag ELISA

0.5µg Human SERPINF2, His Tag Per Well



Immobilized Human SERPINF2, His Tag at 5µg/ml (100µl/well) on the plate. Dose response curve for Anti-SERPINF2 Antibody, hFc Tag with the EC50 of 0.27µg/ml determined by ELISA.